

## GROUP 4A

### TRANSMISSION SHIFT LINKAGE

#### SECTIONS IN GROUP 4A

Section	Subject	Page	Section	Subject	Page
4A-A	3-Speed Synchromesh Linkage-4400-4600 . . . . .	4A-1	4A-C	Super Turbine "300" Linkage . . . . .	4A-1
4A-B	4-Speed Synchromesh Linkage-4600 . . . . .	4A-1	4A-D	Super Turbine "400" Linkage . . . . .	4A-1

#### 4A-A 3-SPEED SYNCHROMESH LINKAGE—4400-4600

1. Place transmission in neutral.
2. Loosen all shift rod clamps. See Figure 4A-1.
3. Install J-21618 on mast jacket.
4. Check levers on side of transmission, making sure they are positioned as shown in the illustration.
5. Tighten shift rod clamps. Torque to 10-15 ft. lbs. Do not over-torque.
6. Remove J-21618 from mast jacket.
7. Check for ease of shifting.

#### 4A-B 4-SPEED SYNCHROMESH LINKAGE—4600

##### a. 4-Speed Synchromesh—4600 Less Console

1. Install guide pin J-21196 in shift linkage at end of shift lever. See Figure 4A-2.
2. Loosen shift rod adjusting clamps to allow shift rods freedom of movement inside swivel.
3. Tighten shift rod adjusting clamps. Torque to 10-15 ft. lbs. Do not over-torque.

4. Remove guide pin J-21196.
5. After shift controls are adjusted to neutral position, hold shift lever in 4th gear by merely resting hand on shift lever to remove all lash in linkage. Then turn "stop" bolt until it contacts shift lever. Torque jam nut to 20-30 ft. lbs. Repeat the same procedure for 3rd gear.
6. Check for ease of shifting.

##### b. 4-Speed Synchromesh—4600 with Console

1. Loosen carpet from console and install guide pin J-21196 through access hole in left side of console. See Figure 4A-3.
2. Loosen shift rod adjusting clamps to allow shift rods freedom of movement inside swivel.
3. Tighten shift rod adjusting clamps. Torque to 10-12 ft. lbs. Do not over-torque.
4. Remove guide pin J-21196.
5. Check for ease of shifting.
6. Re-install carpet to console.

#### 4A-C SUPER TURBINE "300" LINKAGE ADJUSTMENT

1. Loosen shift rod adjusting clamp nut.
2. Set manual shift control lever in Drive "D" range.

3. Set transmission shift lever in Drive "D" range.
4. Tighten shift rod adjusting clamp nut to 10-15 ft. lbs. torque. See Figure 4A-4.

#### 4A-D SUPER TURBINE "400" LINKAGE ADJUSTMENT

##### a. Column Shift

1. Loosen shift rod adjusting swivel clamp nut.
2. Set transmission shift lever in Drive "D" range.
3. Set transmission shift control lever in Drive "D" range.
4. Tighten nut on adjusting swivel clamp to 10-15 ft. lbs. torque. See Figure 4A-5.

##### b. Console Shift

1. Loosen shift rod adjusting swivel clamp nut.
2. Set transmission shift lever in Park "P" detent.
3. Set manual control lever in Park "P" position.
4. Tighten nut on adjusting swivel clamp to 10-15 ft. lbs. torque. See Figure 4A-5.

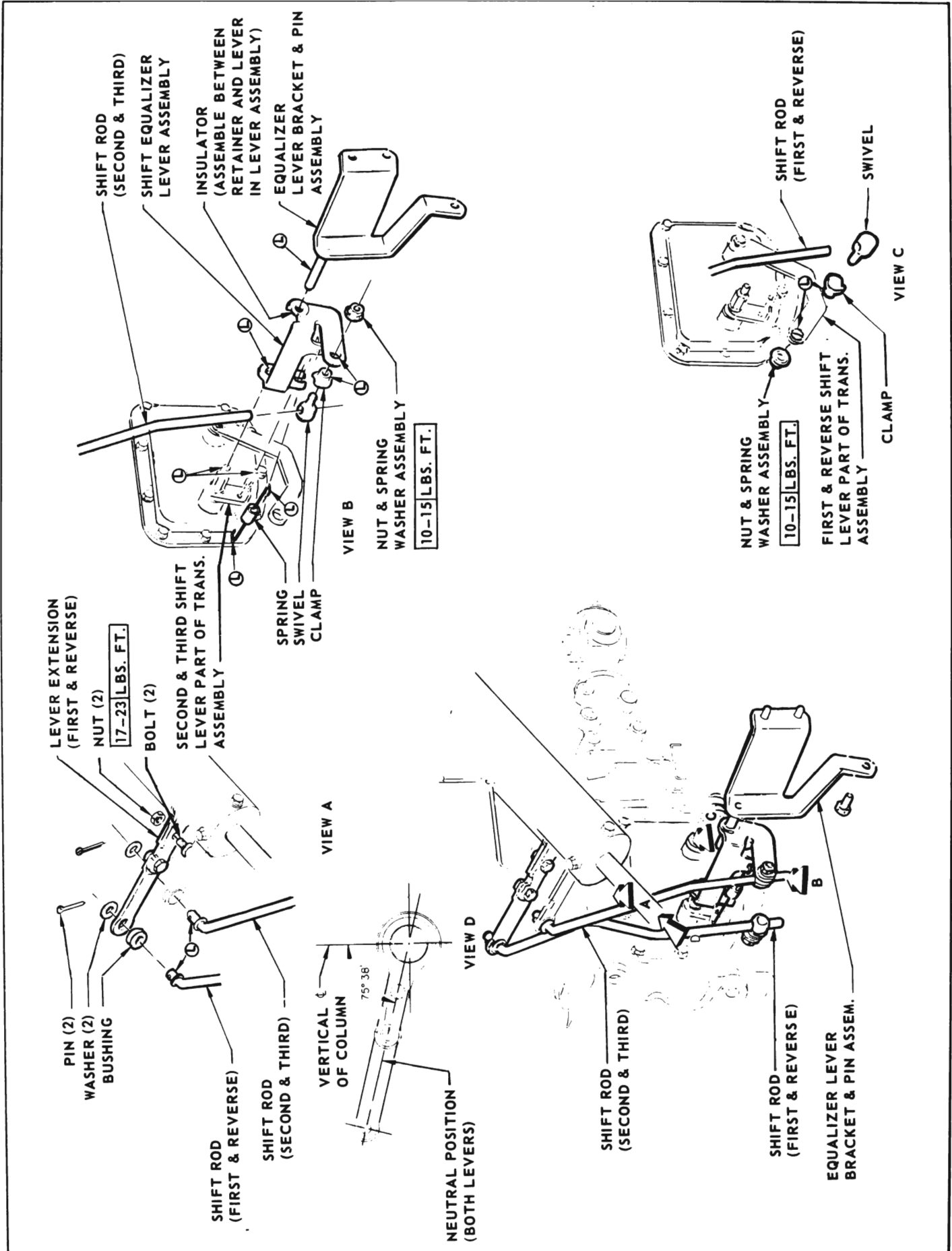


Figure 4A-1-3 Speed Linkage Adjustment - 4400-4600

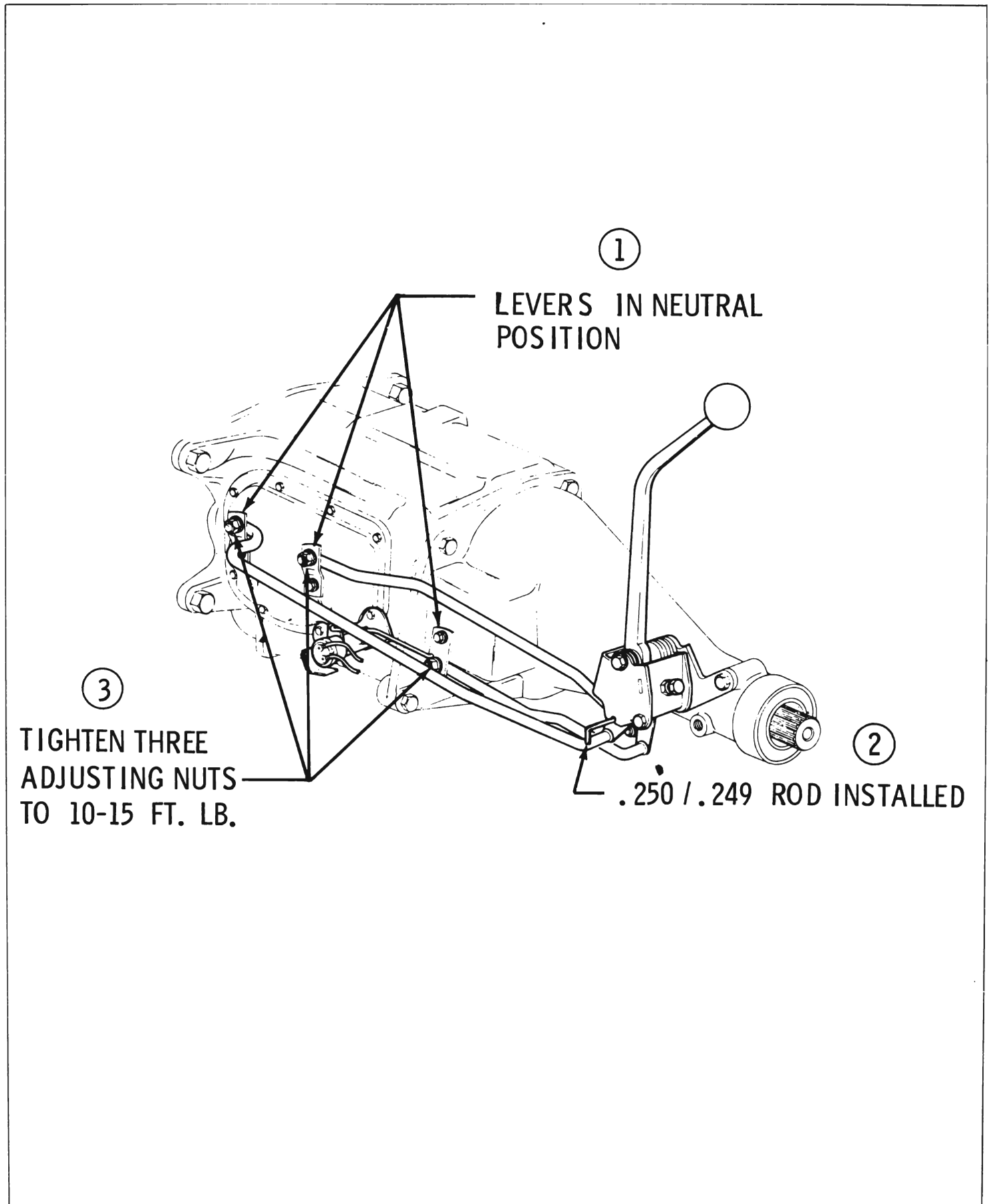


Figure 4A-2-4 Speed Linkage Adjustment - 4600 Less Console

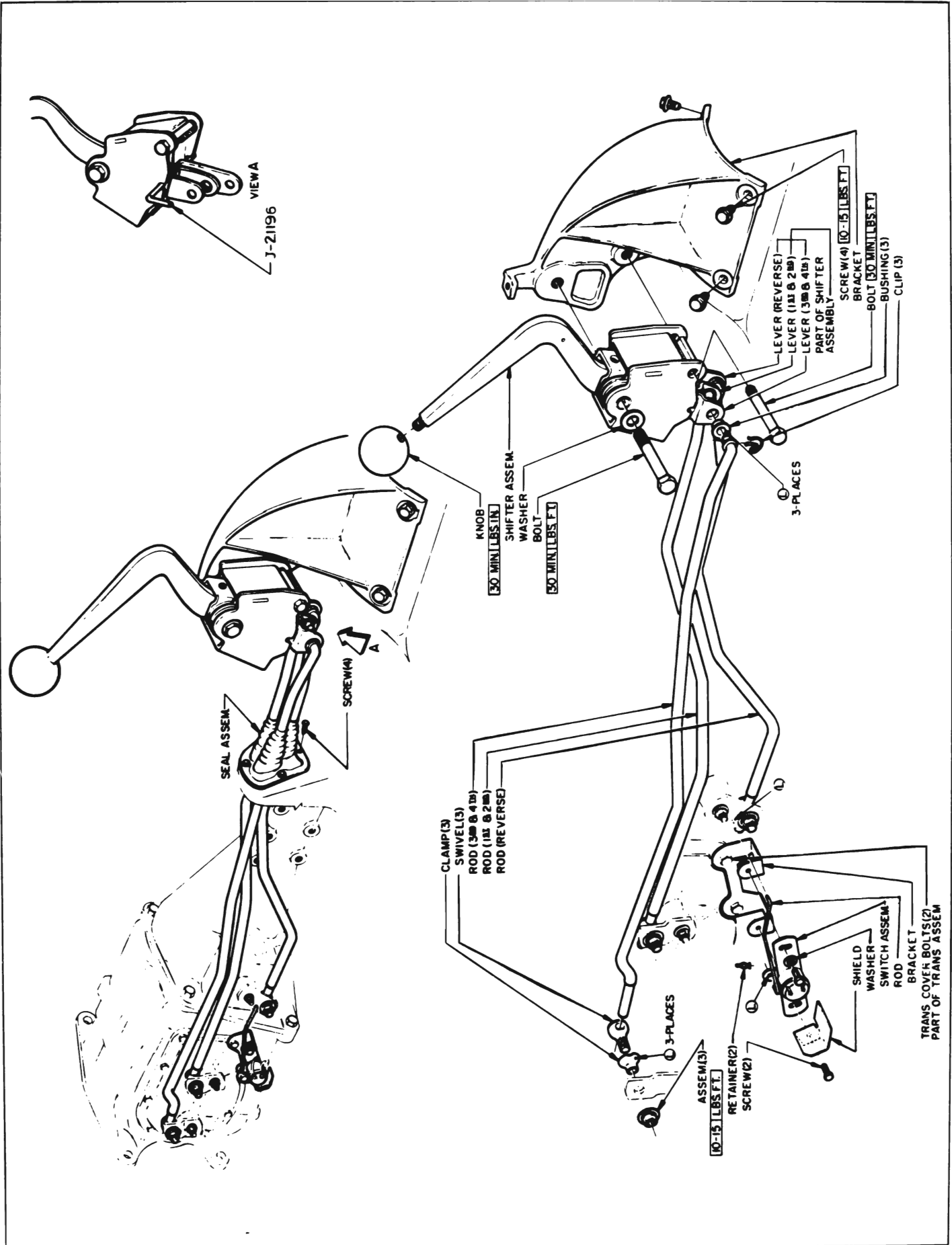
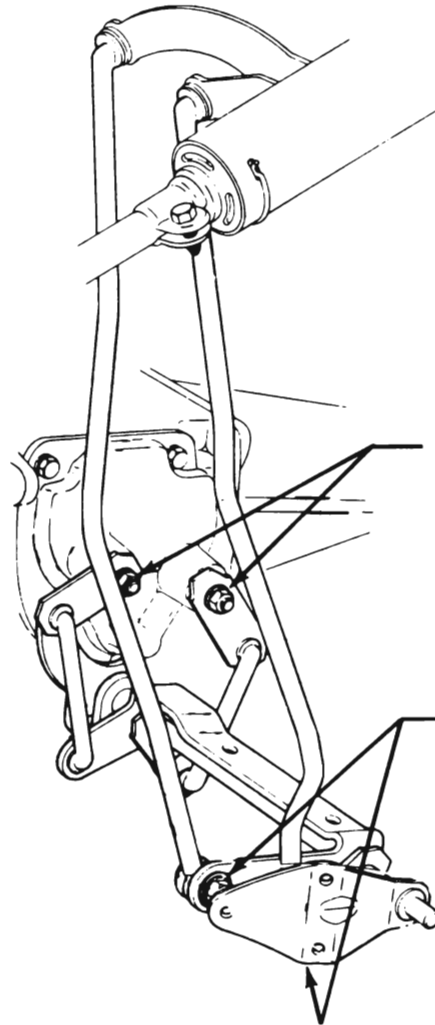
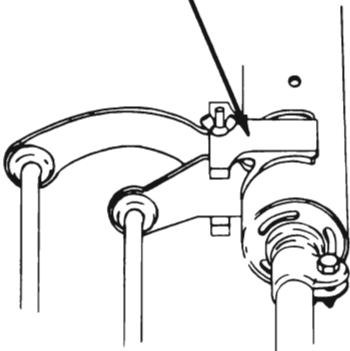


Figure 4A-3-4 Speed Linkage Adjustment - 4600 with Console

① LOOSEN ALL ADJUSTING CLAMPS & NUTS

②

INSTALL TOOL  
J-21618



③

BOTH TRANSMISSION  
LEVERS IN NEUTRAL

④

TIGHTEN BOTH  
ADJUSTING NUTS  
TO 10 - 15 FT. LBS.

Figure 4A-4 -4400 Series Linkage Adjustment

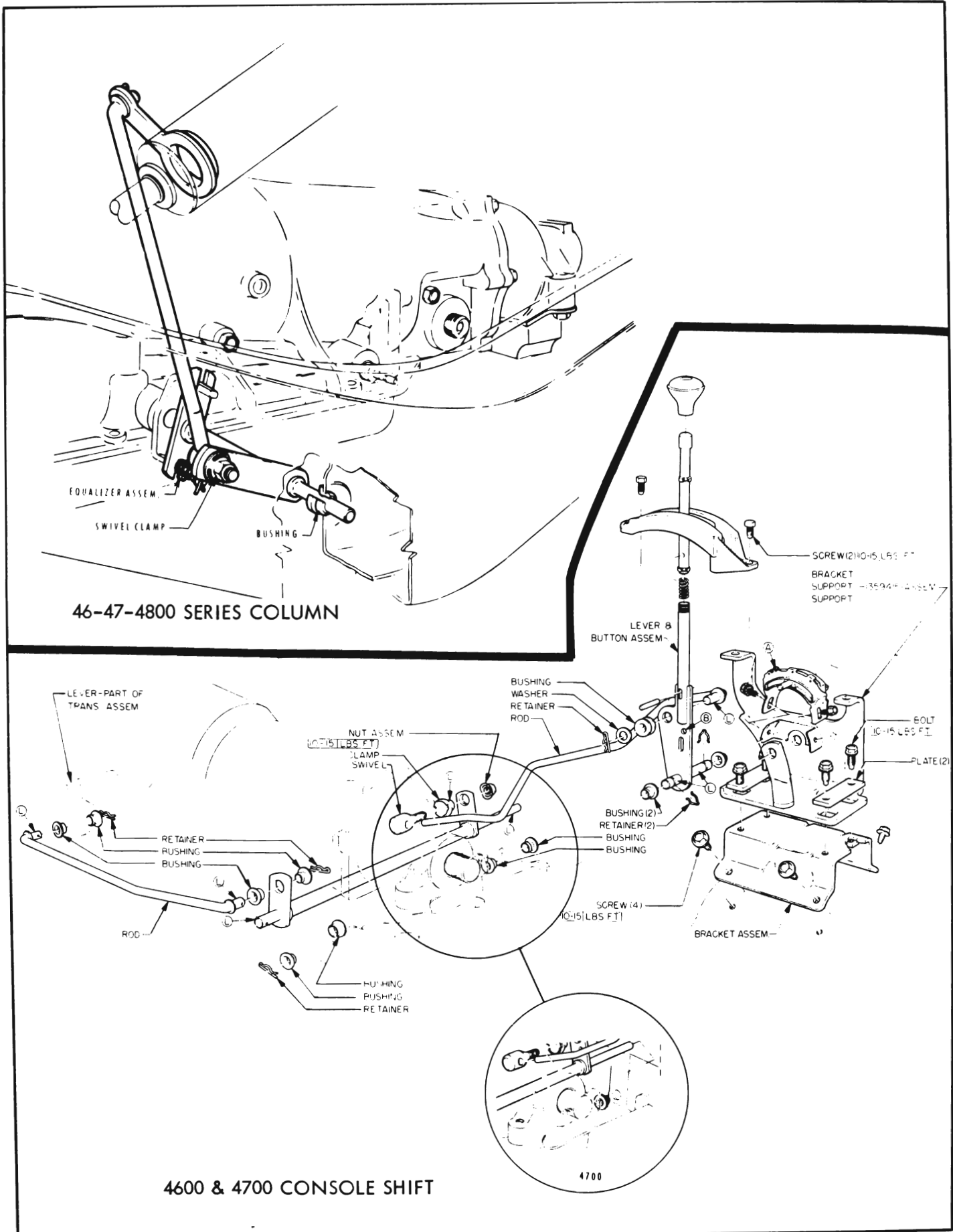


Figure 4A-5—46-47-4800 Series Linkage Adjustment