

GROUP 4A

TRANSMISSION SHIFT LINKAGE

SECTIONS IN GROUP 4A

Section	Subject	Page
4A-A	Automatic Transmission Linkage Adjustment	4A-1
4A-B	3-Speed Synchromesh Shift Linkage Adjustment	4A-1
4A-C	4-Speed Synchromesh Transmission Linkage Adjustment	4A-1

4A-A AUTOMATIC TRANSMISSION LINKAGE ADJUSTMENT

See Figure 4A-1.

4A-B 3-SPEED SYNCHROMESH SHIFT LINKAGE ADJUSTMENT

a. Indications of Linkage Trouble

Need for a shift linkage adjustment is indicated by the following signs:

1. Shift levers at end of steering column contact sides of opening in mast jacket.
2. Control lever does not move smoothly from 2nd-3rd range into the 1st-Reverse range when lever is lift-straight toward the steering wheel.
3. Binding or hard shifting from

1st to reverse or 2nd to 3rd ranges.

b. Adjustment

1. Place transmission in neutral.
2. Loosen all shift rod clamps.
3. Install J-21603 on the mast jacket, as shown on Figure 4A-2.
4. Check shift levers on side of transmission, making sure they are in neutral and positioned as shown on Figure 4A-2.
5. Tighten 1st-Reverse and 2nd-3rd adjustment clamps. Torque to 10-15 ft. lbs.

Note: Over-torquing can cause hard shifting by binding swivel joints.

6. Recheck adjustment by depressing clutch and shifting into each gear. Be sure that the lever movement from 2nd-3rd range into 1st-Reverse range is smooth.

4A-C 4-SPEED SYNCHROMESH TRANSMISSION LINKAGE ADJUSTMENT

1. Install guide pin J-21196 into shift linkage. See Figure 4A-3.
 2. Loosen shift rod adjusting clamps to allow shift rods freedom of movement inside swivel. See Figure 4A-3.
 3. Tighten shift rod adjusting clamps. Torque to 10-15 ft. lbs.
- Caution: Over-torquing can cause hard shifting by binding swivel joint.

4. Remove guide pin J-21196.
5. After shift controls are adjusted to neutral position, hold shift lever in 4th gear by merely resting hand on shift lever to remove all lash in linkage; then turn "stop" bolt until it contacts shift lever. Torque jam nut to 20-30 ft. lbs. Repeat the same procedure for 3rd gear. See Figure 4A-3.
6. Check for ease of shifting.

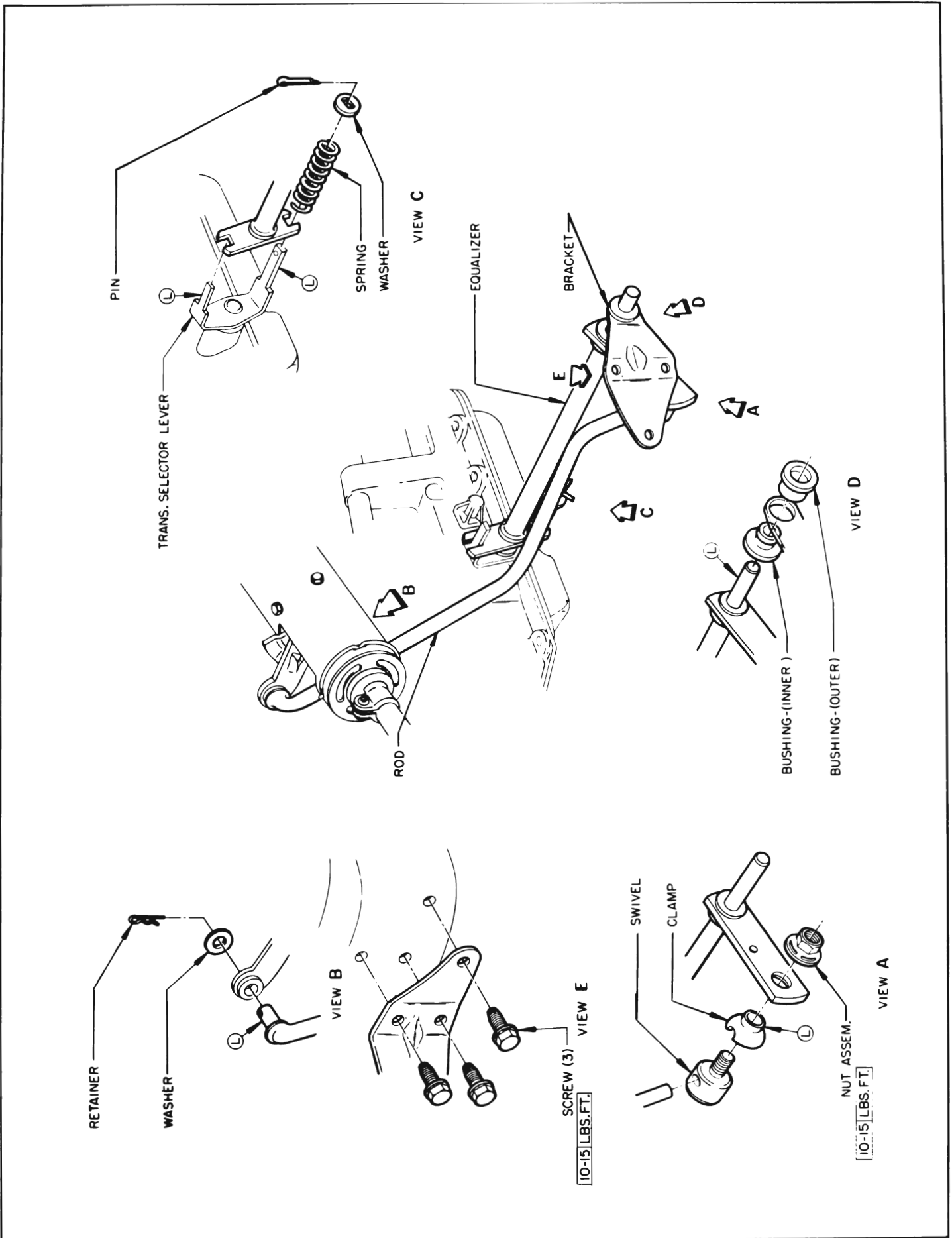


Figure 4A-1—Automatic Transmission Linkage Adjustment

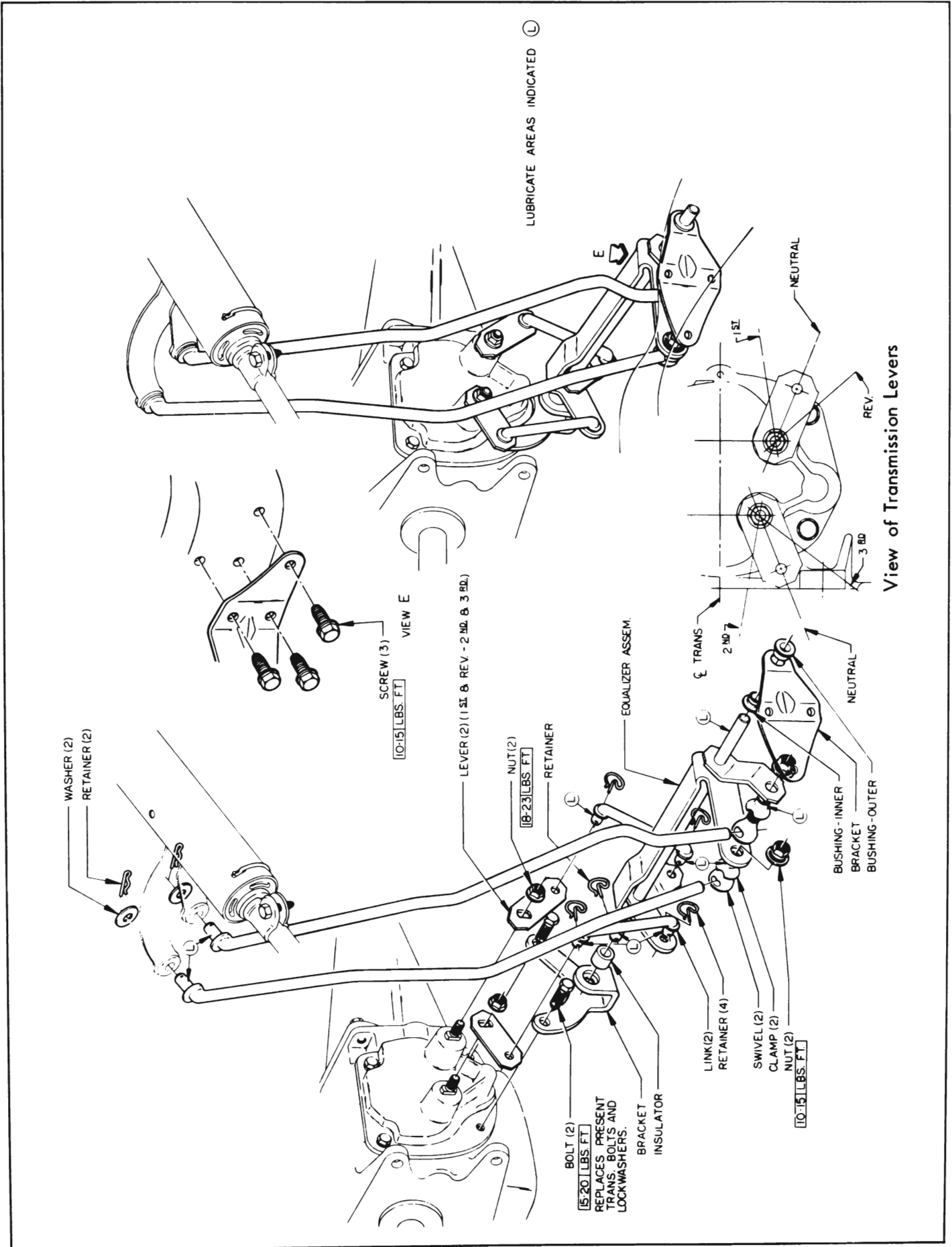


Figure 4A-2-3-Speed Synchromesh Adjustment

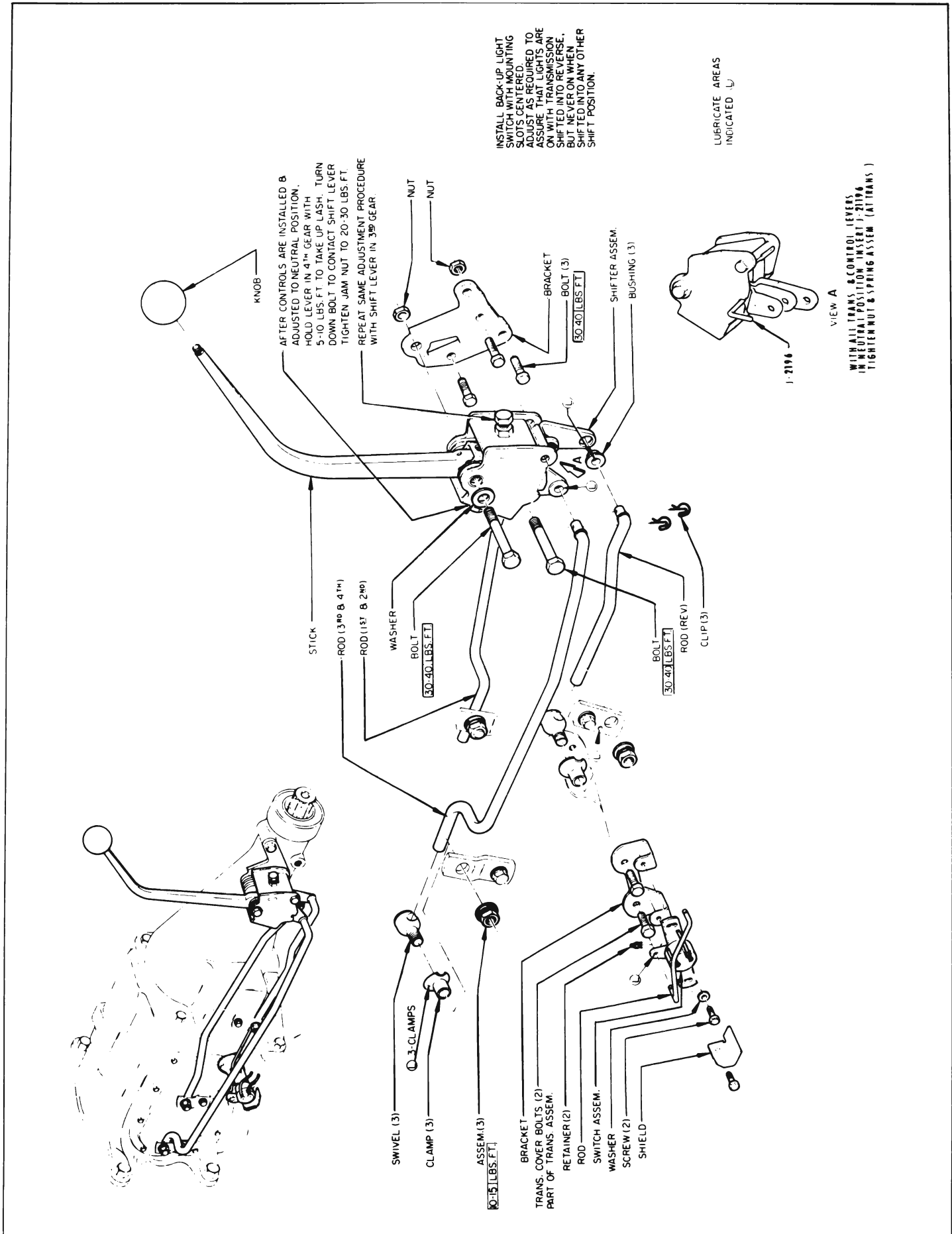


Figure 4A-3—4-Speed Synchromesh Adjustment