

# GROUP 0

## INTRODUCTION – GENERAL INFORMATION

### CONTENTS OF GROUP 0

Subject	Page	Subject	Page
Introduction.....	0-1	General Specifications.....	0-3
Warranty.....	0-2	Car and Engine Serial Numbers.....	0-3
1959 Car Models.....	0-3		

### INTRODUCTION

This manual is divided into major *Groups*, *Sections*, and *Paragraphs* as explained below. The purpose of this arrangement is to bring related subjects closely together in accordance with the usual methods of performing service operations, and consequently to present information in a logical and easily understood order.

Any desired subject in this manual may be

located by reference to the alphabetical index at back of manual.

Any desired subject also may be located by turning to the first page of the appropriate *Group* where contents of the *Group* are listed. Where the *Group* is divided into *Sections* the first page of each *Section* lists the contents of the *Section*.

1. **GROUPS.** The manual is divided into the consecutively numbered major *Groups* shown on the preceding title page. To locate the first page of a *Group*, bend the manual until the black tab on first page of group can be seen in line with the *Group* title on title page.

The first page lists the contents of the *Group*.

2. **SECTIONS.** Large *Groups* are divided into appropriate *Sections* as shown on first page of the group. *Sections* bear the *Group* number and letters A, B, C, etc., in alphabetical order.

The first page of each *Section* lists the contents of section.

3. **PARAGRAPHS.** Each *Group* is divided into appropriate *Paragraphs* which are numbered consecutively within the *Group*, whether or not the group is divided into sections.

*Paragraph* titles and page numbers are listed on the first page of each *Section* if used, or on first page of the *Group* if sections are not used.

4. **SUB-PARAGRAPHS.** Where necessary for clarity, or distinction between models, *Paragraphs* are divided into appropriately titled *Sub-paragraphs*. These are usually lettered in alphabetical order within the paragraph.

5. **PAGE AND ILLUSTRATION NUMBERS.** Pages and illustrations are numbered consecutively within each *Group*. The number consists of the *Group* number followed by the *Page* or *Figure* number. Page numbers are printed in the upper *outer* corners of all pages. The small folio numbers at inner edges of pages are for printer's use only and are not used for reference in the manual.

6. **CROSS REFERENCES.** All references to information in other parts of manual are made by *Paragraph Number*, to avoid the necessity of first referring to the alphabetical index for location. Paragraph references are usually given in parentheses, for example: (par. 7-15) refers to the 15th paragraph in *Group 7*, "Chassis Suspension".

7. **SPECIAL TOOLS.** Unless otherwise indicated, all special tools identified by tool numbers in the manual are available through Kent-Moore Organization, Inc., General Motors Building, Detroit 2, Michigan.

### MANUFACTURER'S WARRANTY

On new Buick motor vehicles, purchased by the Dealer issuing this Policy from Buick Motor Division, General Motors Corporation (the Manufacturer), Manufacturer gives Dealer the warranty quoted below. On each new Buick motor vehicle sold by Dealer, Dealer, as seller thereof and not as agent of Manufacturer, gives Purchaser a like warranty.

*"The Manufacturer warrants each new motor vehicle, including all equipment or accessories (except tires) supplied by the Manufacturer, chassis or part manufactured by it to be free from defects in material and workmanship under normal use and service, its obligation under this warranty being limited to making good at its factory any part or parts thereof which shall, within ninety (90) days after delivery of such vehicle to the original purchaser or before such vehicle has been driven 4,000 miles, whichever event shall first occur, be returned to it with transportation charges prepaid and which its examination shall disclose to its satisfaction to have been thus defective; this warranty being expressly in lieu of all other warranties, expressed or implied, and all other obligations or liabilities on its part, and it neither assumes nor authorizes any other person to assume for it any other liability in connection with the sale of its vehicles.*

*This warranty shall not apply to any vehicle which shall have been repaired or altered outside of an authorized Buick Service Station in any way so as in the judgment of the Manufacturer to affect its stability and reliability, nor which has been subject to misuse, negligence or accident.*

The Manufacturer has reserved the right to make changes in design or add any improvements on motor vehicles and chassis at any time without incurring any obligation to install same on motor vehicles and chassis previously purchased.

## 1959 CAR MODELS

Model	Designation	Illustrated on Page No.
<b>LE SABRE—SERIES 4400</b>		
4411	2-Door Sedan . . . . .	2-18
4419	4-Door Sedan . . . . .	2-35
4435	4-Door Estate Wagon . . . . .	2-40
4437	2-Door Hardtop . . . . .	2-46
4439	4-Door Hardtop . . . . .	2-46
4467	Convertible . . . . .	3-18
<b>INVICTA—SERIES 4600</b>		
4619	4-Door Sedan . . . . .	3-64
4635	4-Door Estate Wagon . . . . .	3-64
4637	2-Door Hardtop . . . . .	4-8
4639	4-Door Hardtop . . . . .	5-108
4667	Convertible . . . . .	5-108
<b>ELECTRA—SERIES 4700</b>		
4719	4-Door Sedan . . . . .	6-23
4737	2-Door Hardtop . . . . .	8-9
4739	4-Door Hardtop . . . . .	9-6
<b>ELECTRA "225" SERIES 4800</b>		
4829	4-Door Riviera Sedan . . . . .	9-11
4839	4-Door Hardtop . . . . .	10-18
4867	Convertible . . . . .	10-32

## GENERAL SPECIFICATIONS

Items	Series 4400	Series 4600	Series 4700 and Model 4867	Series 4800 except Model 4867
Wheelbase . . . . .	123"	123"	126.3"	126.3"
Tread—Front . . . . .	62.41"	62.41"	62.41"	62.41"
Tread—Rear . . . . .	60.00"	60.00"	60.00"	60.00"
Length Over-all . . . . .	217.4"	217.4"	220.7"	225.4"
Width Over-all at Widest Point . . . . .	80.74"	80.74"	80.74"	80.74"
Height Over-all, Roof to Road at Curb Weight . . . . .				
Styles—11—19—29 . . . . .	58.5"	58.5"	58.7"	58.7"
— 37— . . . . .	56.0"	56.0"	56.43"	
— 39— . . . . .	55.9"	55.9"	55.9"	56.15"
Front Overhang (C.L. of Front Wheels to Front of Bumper) . . . . .	34.6"	34.6"	34.6"	34.6"
Rear Overhang (C.L. of Rear Wheels to Rear of Bumper) . . . . .	59.75"	59.75"	59.75"	64.45"

## IDENTIFICATION NUMBERS

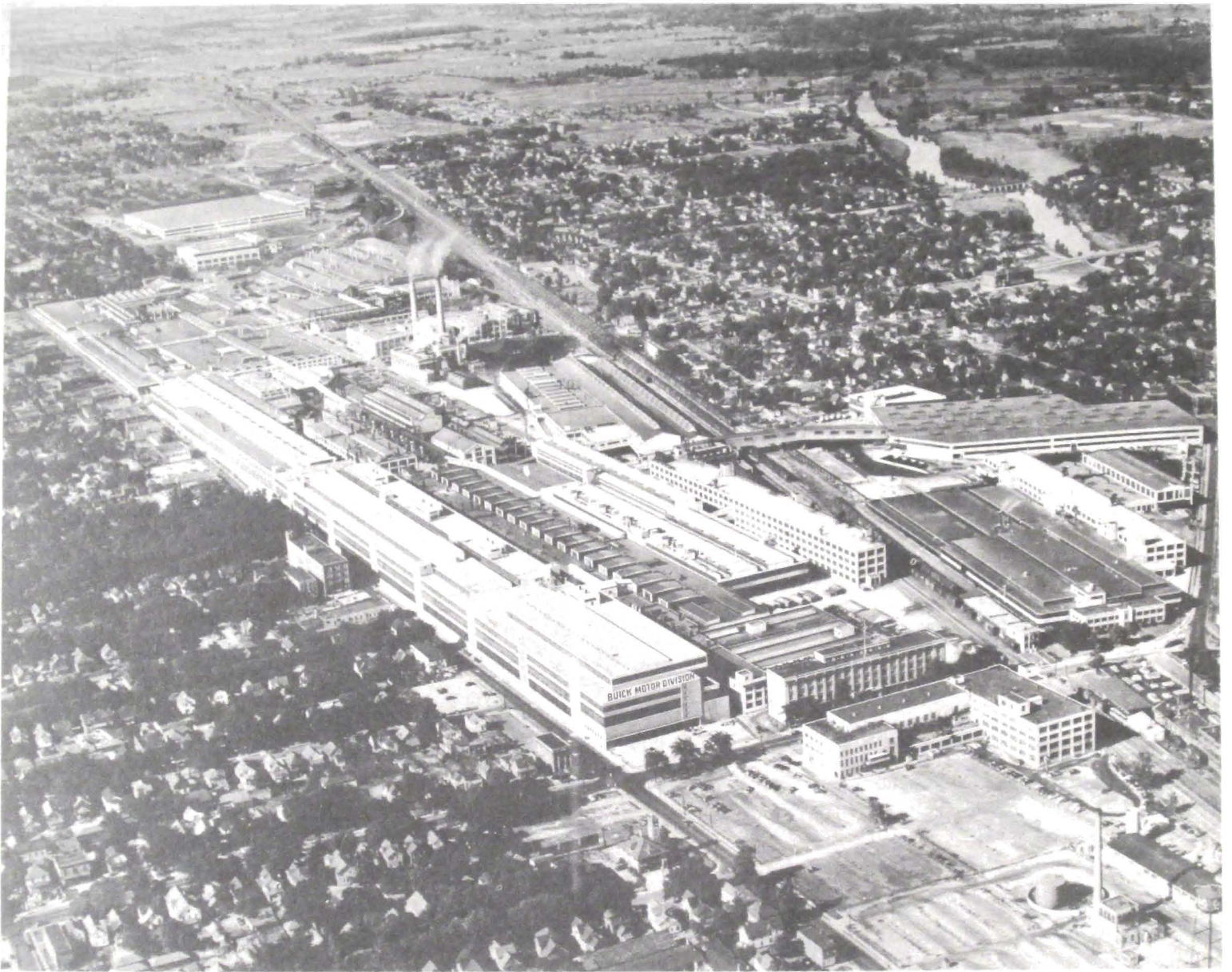
The vehicle identification number is embossed on a plate welded to the body on the left front door hinge pillar. The first digit of the number indicates the series: 4 for series 4400, 6 for series 4600, 7 for series 4700, 8 for series 4800. Next is a letter designating year (D for '57, E for '58, F for '59). The third prefix is a digit (1 through 8) identifying the plant at which the car was built: 1—Flint, 2—South Gate, 3—Linden, 4—Kansas City, 5—Wilmington, 6—Atlanta, 7—Framingham, 8—Arlington. The remaining group of six digits is the individual car serial number.

This number is also stamped on the top surface of the crankcase, just forward of the valve lifter cover on the left side and constitutes the

legal engine number.

Toward the right side on this same surface will appear the *production code number*, (Stamped upside down when viewed from the front of the engine). This number, along with the *vehicle identification number*, (car serial number) will be used to identify the engine on product reports etc. The production code number is prefaced by 4F on 1959 401 cubic inch engines and by 3F on 1959 364 cubic inch engines. The production code number does *not* constitute a legal engine number for registration, titles, etc.

A 1/4" long dash (—) after the production code number indicates a .010" oversize cylinder bore engine.



**MAIN PLANT  
BUICK MOTOR DIVISION  
FLINT, MICHIGAN**