

GROUP 4A

TRANSMISSION SHIFT LINKAGE ADJUSTMENTS

GRAN SPORT

SECTIONS IN GROUP 4A

Section	Subject	Page	Section	Subject	Page
4A-A	Super Turbine 300 Transmission Shift Linkage Adjustment - Gran Sport Only	4A-1	4A-C	4-Speed Manual Transmission Shift Linkage Adjustment - Special-Skylark-Gran Sport	4A-7
4A-B	3-Speed Manual Transmission Shift Linkage Adjustment - Gran Sport Only	4A-4			

4A-A SUPER TURBINE 300 TRANSMISSION SHIFT LINKAGE ADJUSTMENT (CONSOLE LINKAGE)



Figure 4A-1

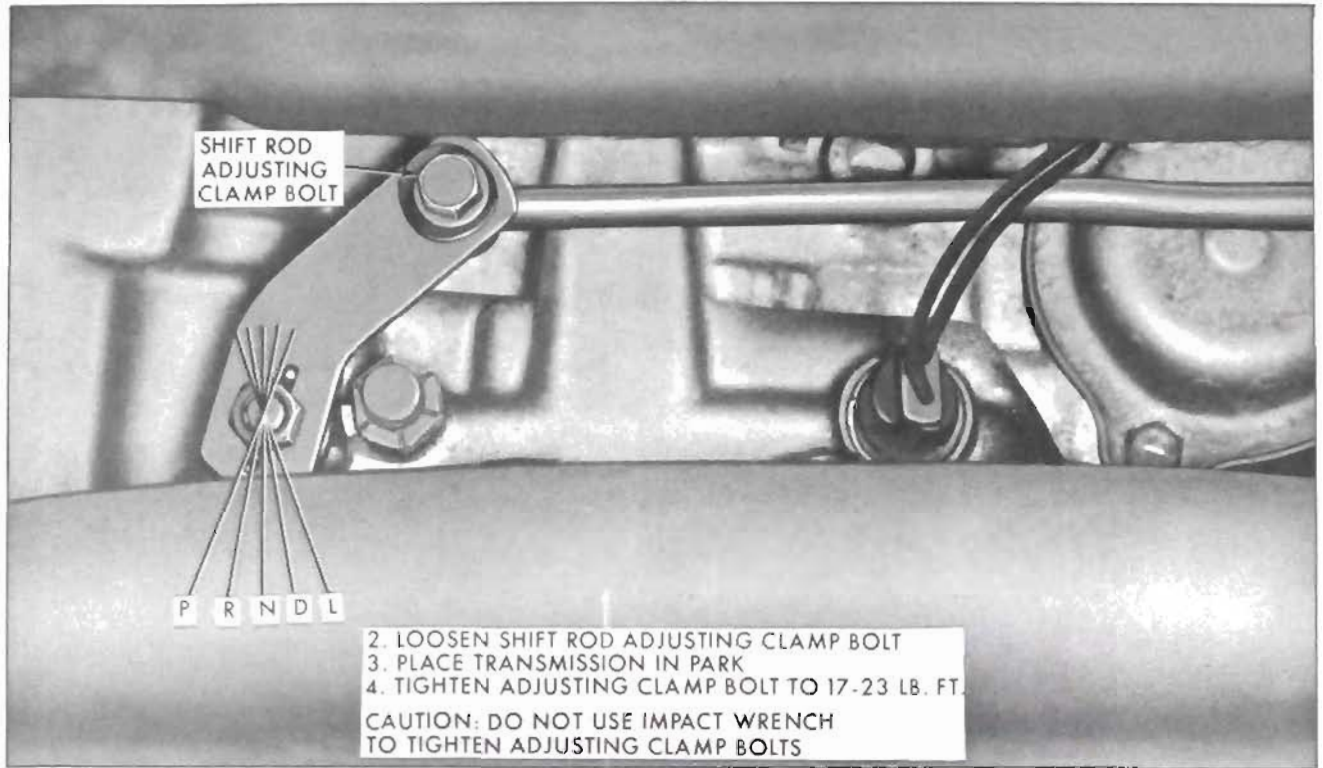


Figure 4A-2

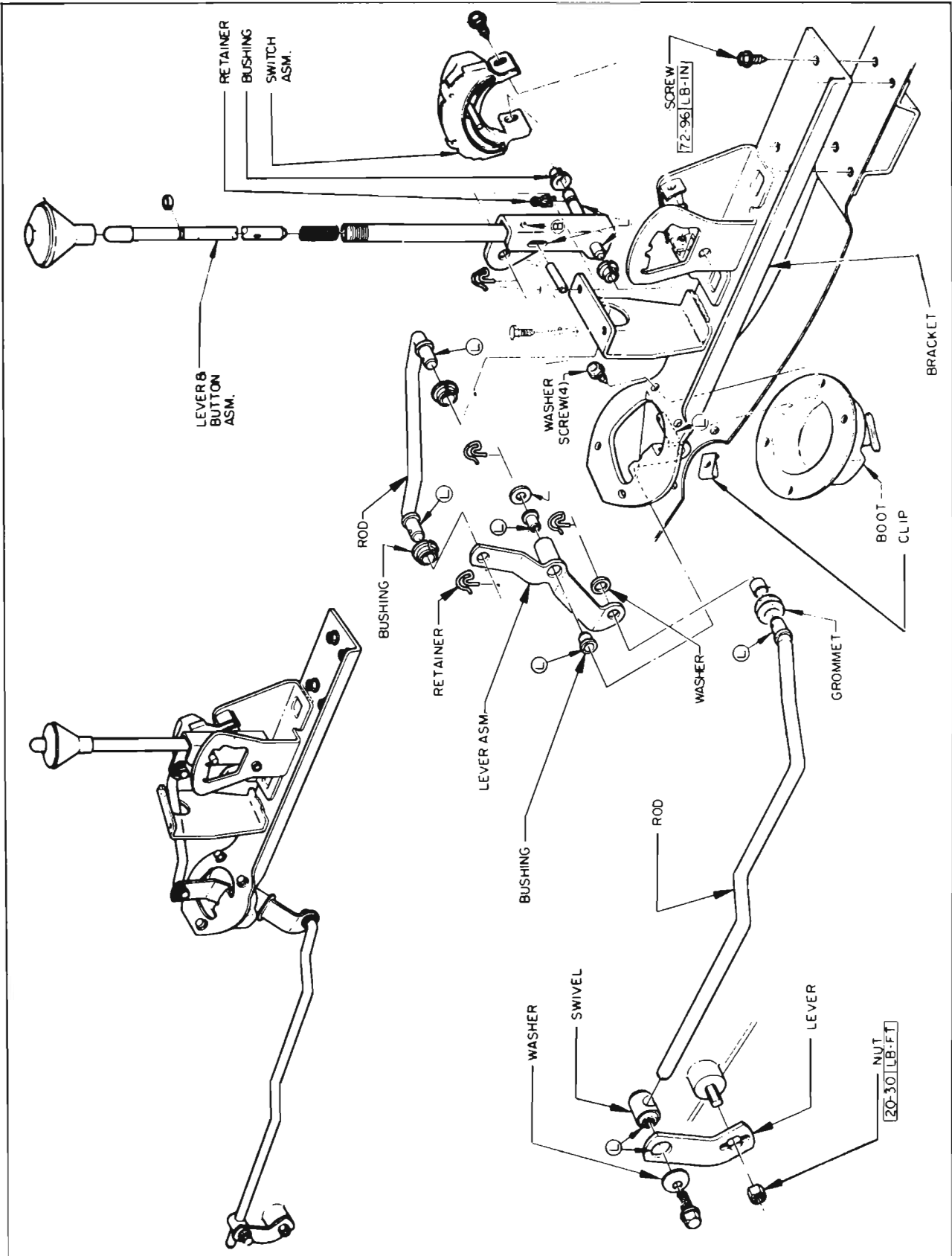


Figure 4A-3

4A-B 3-SPEED MANUAL TRANSMISSION SHIFT LINKAGE ADJUSTMENT

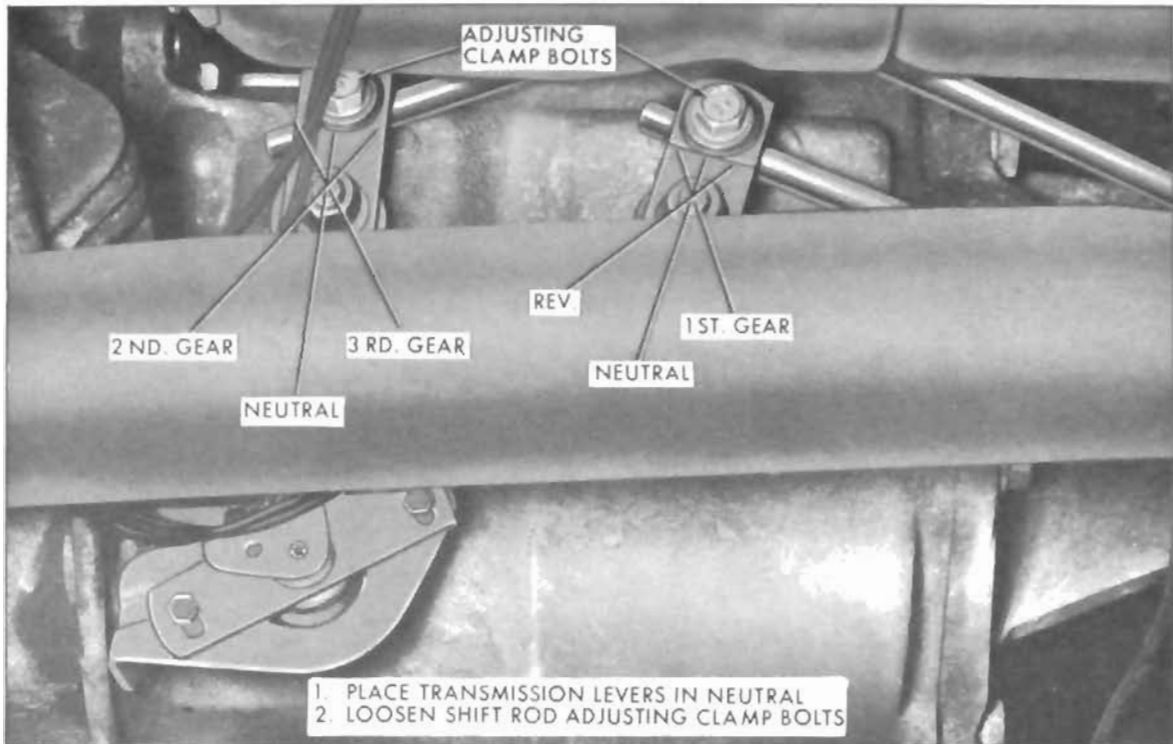


Figure 4A-4

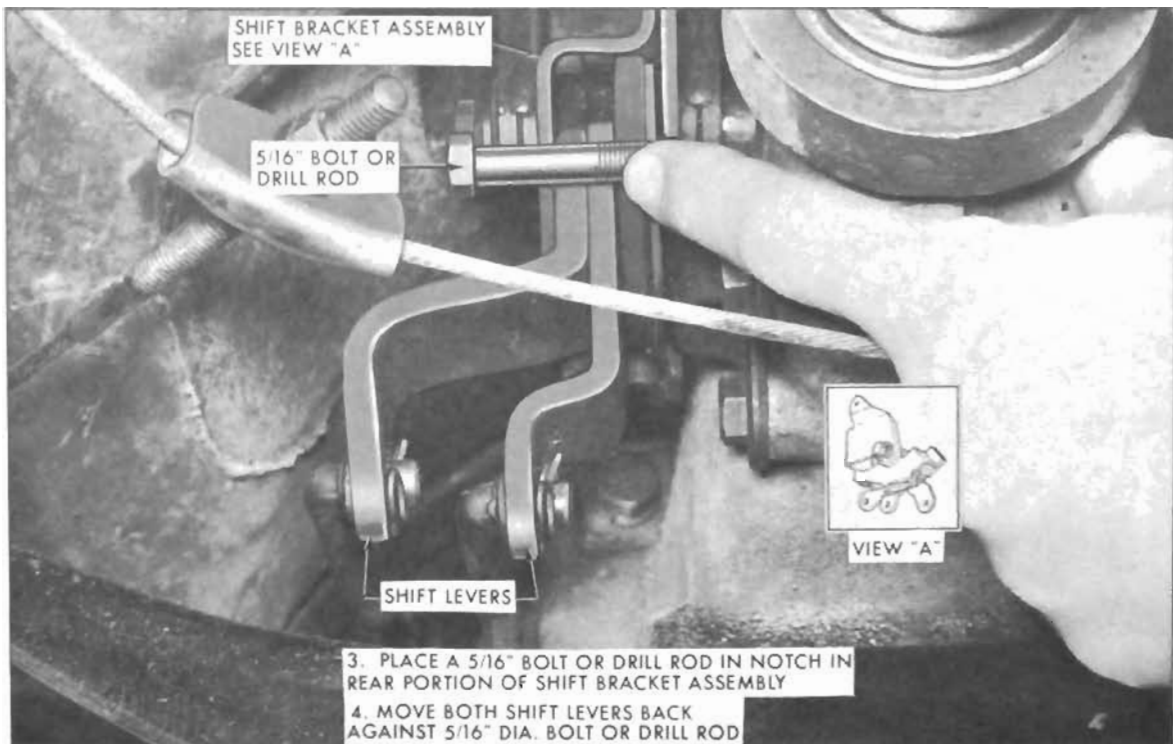


Figure 4A-5

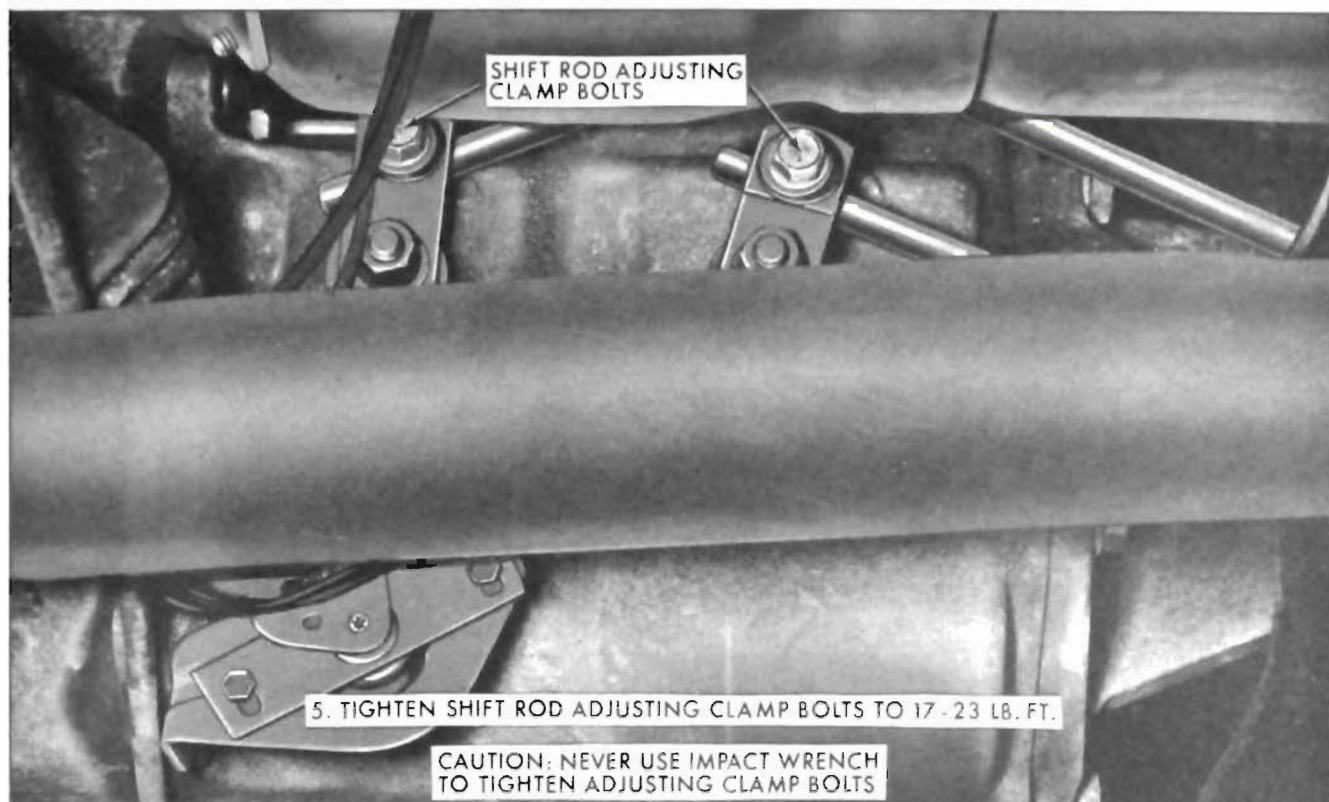


Figure 4A-6

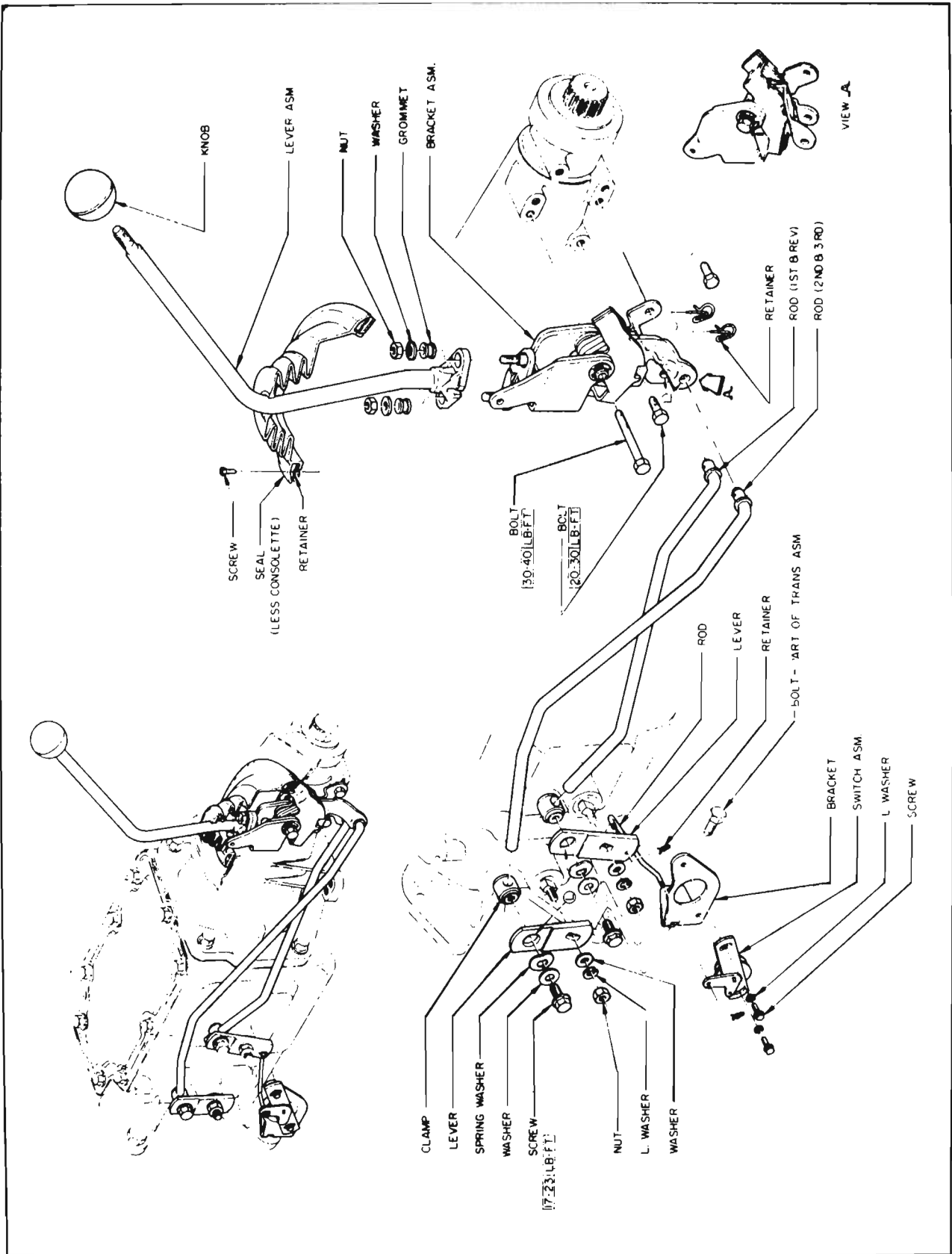


Figure 4A-7

4A-C 4-SPEED MANUAL TRANSMISSION SHIFT LINKAGE ADJUSTMENT SPECIAL-SKYLARK-GRAN SPORT

NOTE: This adjustment will also apply to all 1965-1/2 Special and Skylarks equipped with 4-speed transmission.

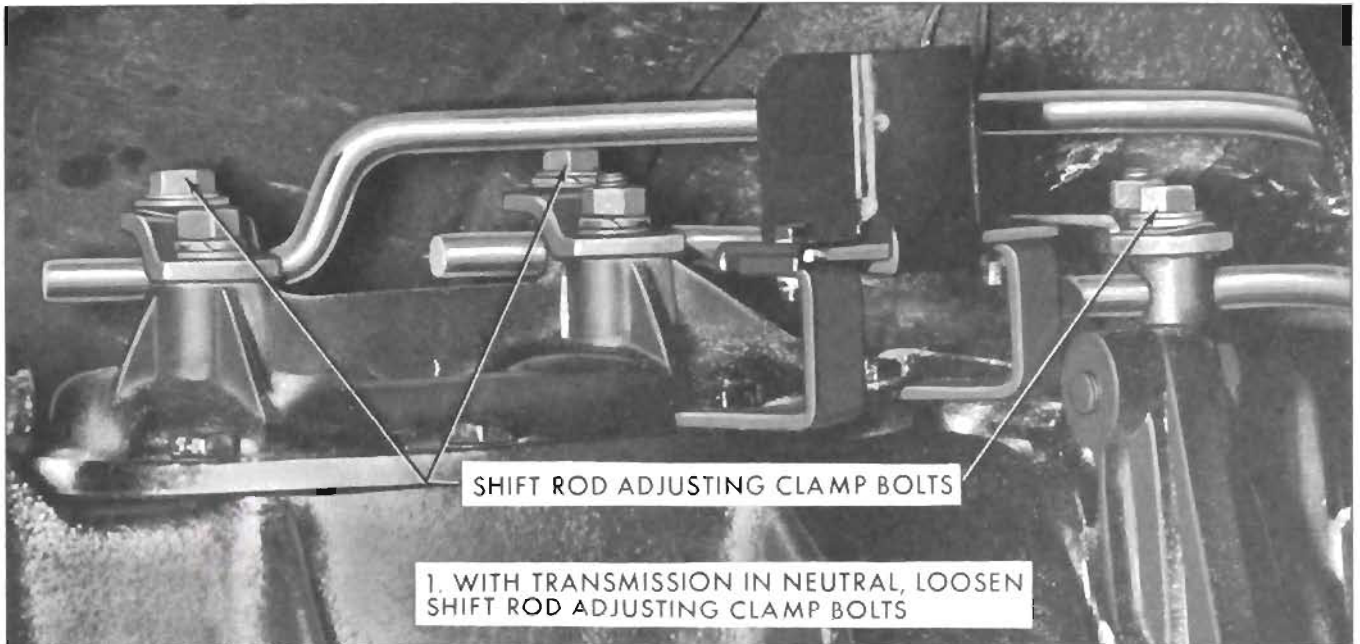


Figure 4A-8

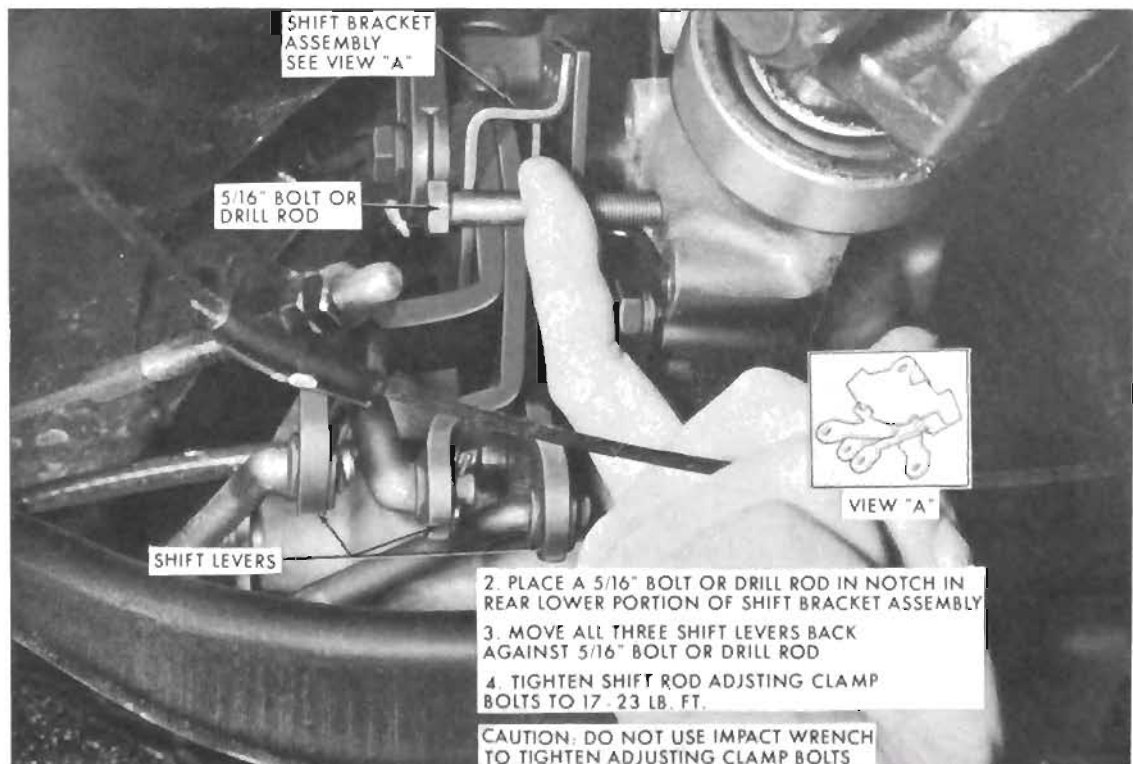


Figure 4A-9

This "T" handle must travel a minimum of 7/16"

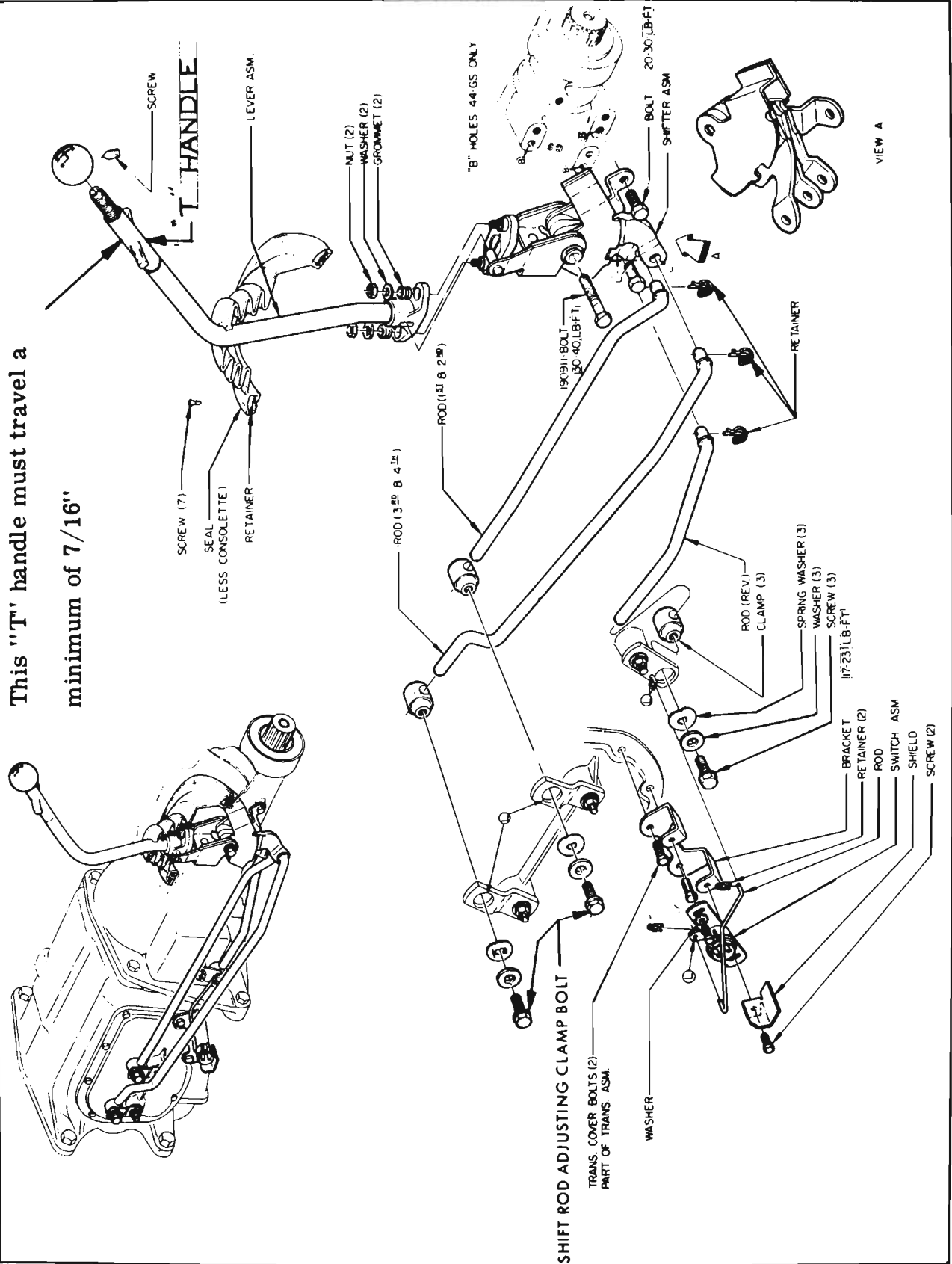


Figure 4A-10