

SHIFT LINKAGE ALL SERIES CONTENTS

| Subject | Page No. |
|---|---------------|
| DESCRIPTION AND OPERATION: (Not Applicable) | |
| DIAGNOSIS: (Not Applicable) | |
| MAINTENANCE AND ADJUSTMENTS: | |
| 350 and 400 Turbo Hydra-Matic Transmission Linkage Adjustment (Console Shift) "A" and "E" Series | 7E-282 |
| 350-375B and 400 Turbo Hydra-Matic Transmission Linkage Adjustment (Column Shift) - All Series | 7E-287 |
| 3-Speed Manual Transmission Linkage Adjustment - "A" Series | 7E-292 |
| 4-Speed Manual Transmission Linkage Adjustment - (Floor Shift) - "A" Series G.S. Option | 7E-295 |
| MAJOR REPAIR: (Not Applicable) | |
| SPECIFICATIONS: (Not Applicable) | |

**350 AND 400 TURBO HYDRA-MATIC TRANSMISSION LINKAGE ADJUSTMENT (Console Shift)
"A" AND "E" SERIES**

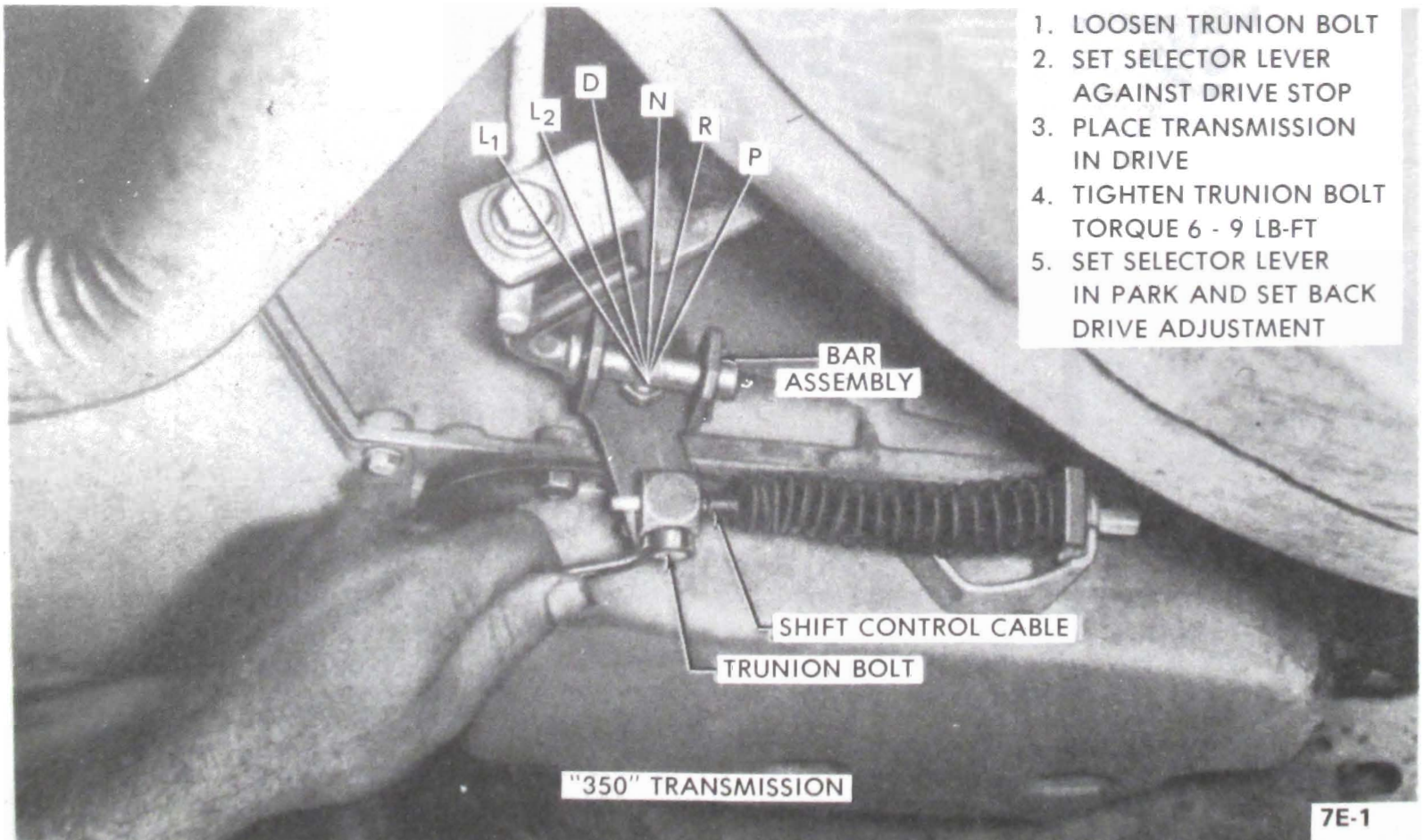


Figure 7E-1 - 350-400 - "A" Series

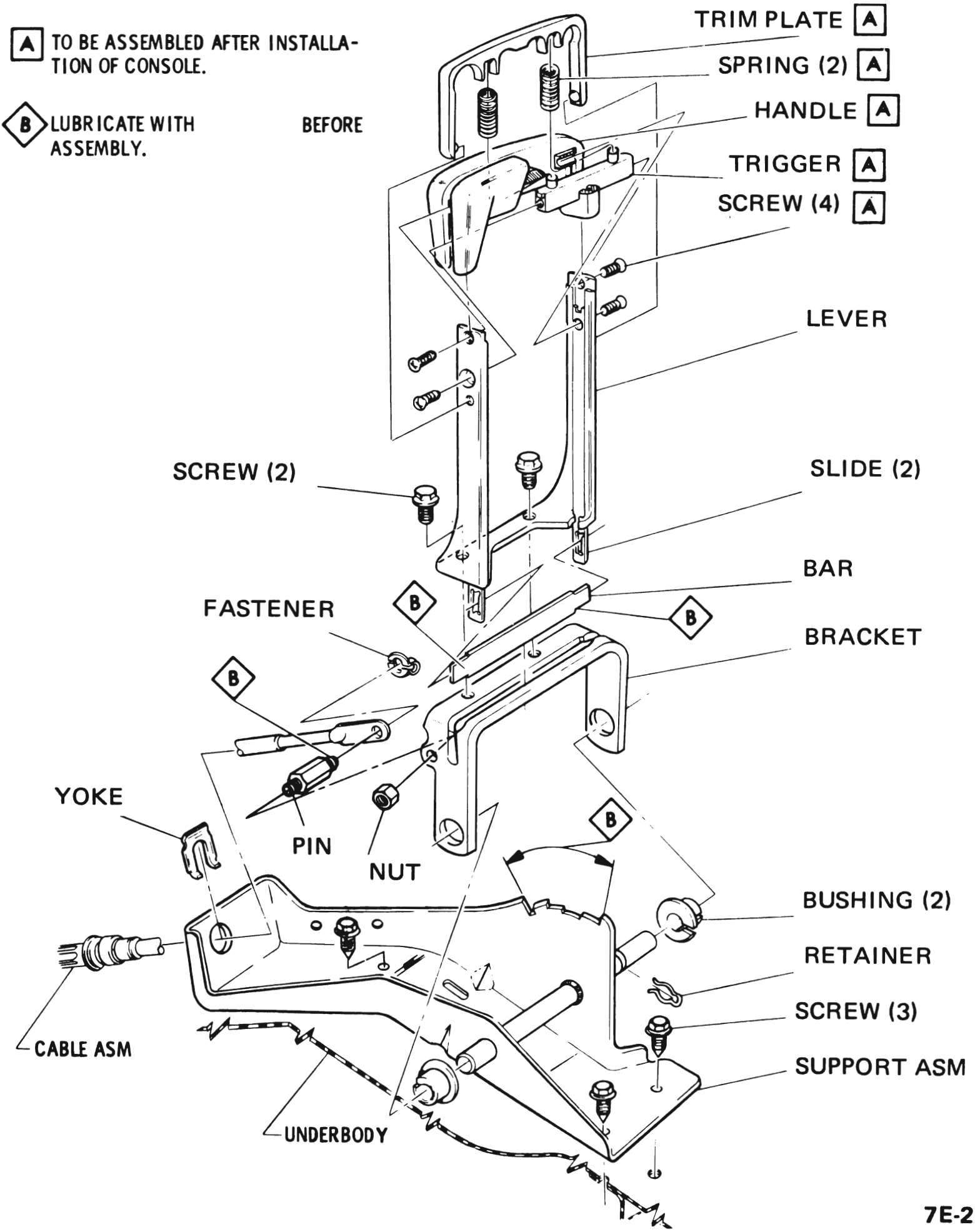
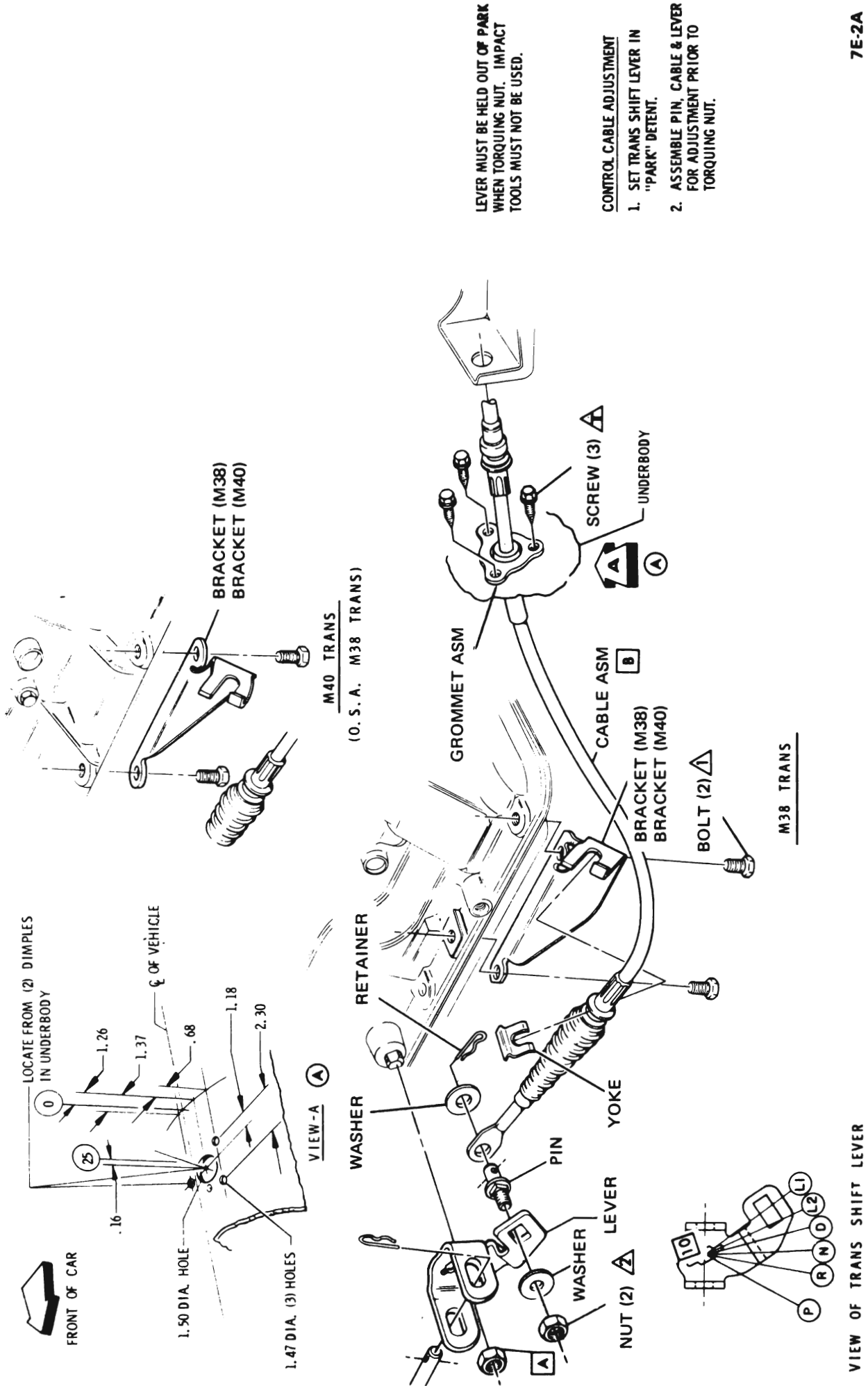


Figure 7E-2 - 350-400 - "A" Series

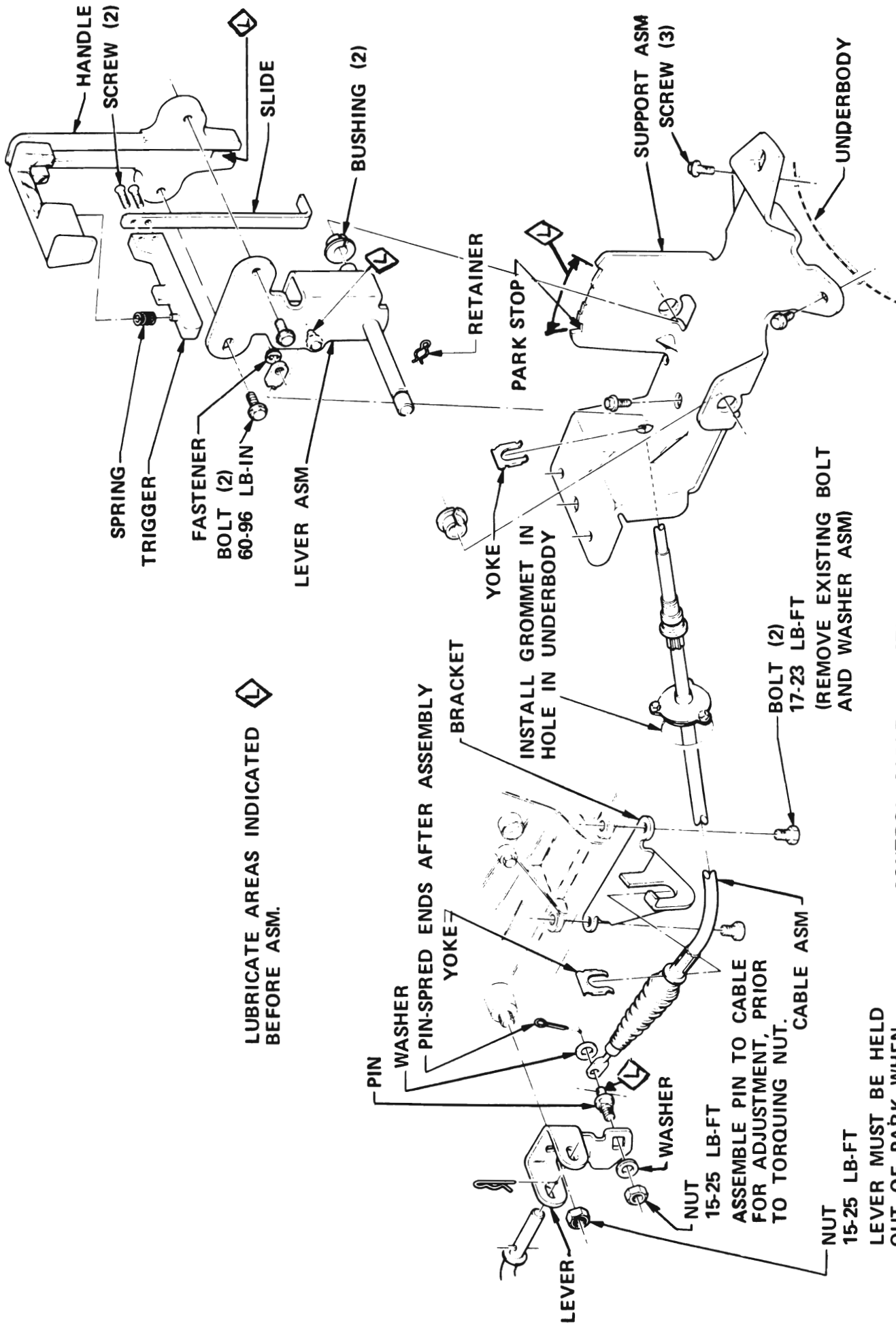


LEVER MUST BE HELD OUT OF PARK WHEN TORQUING NUT. IMPACT TOOLS MUST NOT BE USED.

CONTROL CABLE ADJUSTMENT

1. SET TRANS SHIFT LEVER IN "PARK" DETENT.
2. ASSEMBLE PIN, CABLE & LEVER FOR ADJUSTMENT PRIOR TO TORQUING NUT.

Figure. 7E-2A



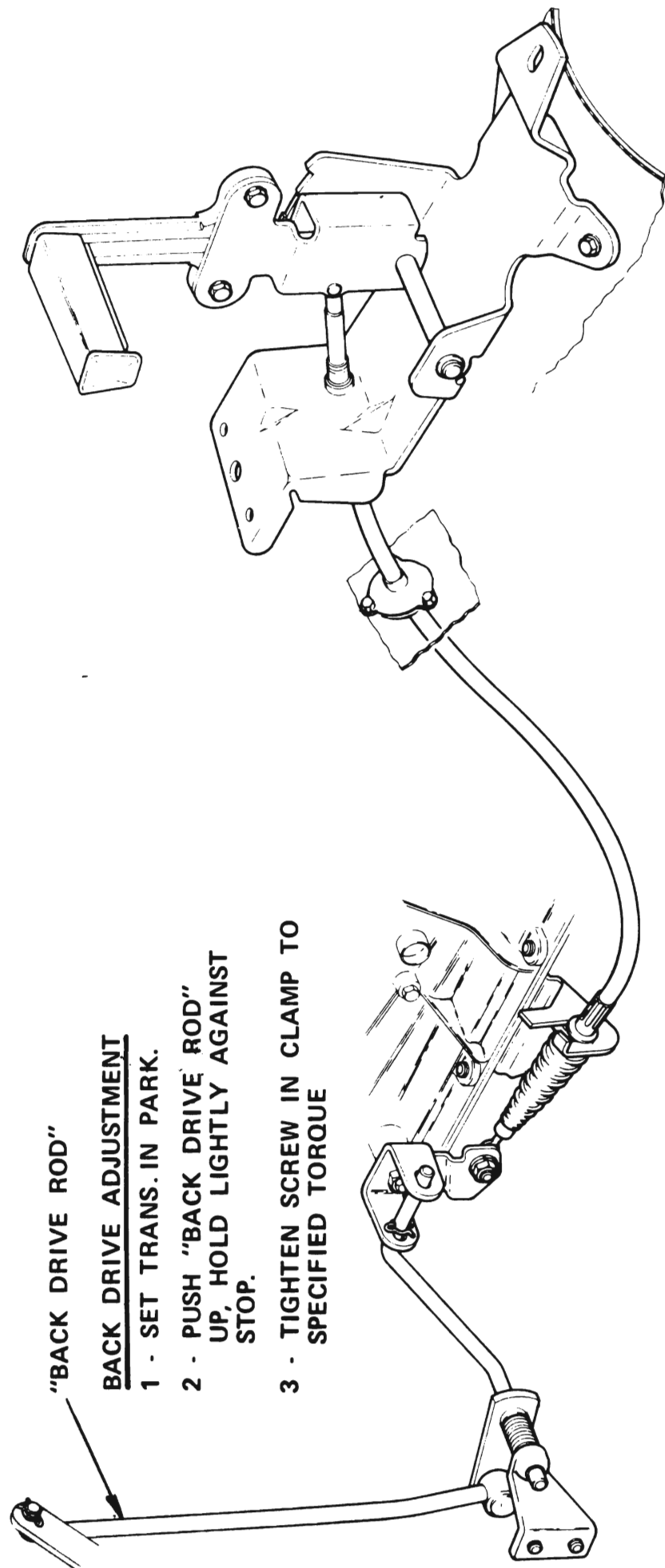
LUBRICATE AREAS INDICATED  BEFORE ASM.

CONTROL CABLE ADJUSTMENT

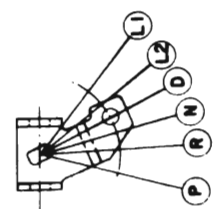
- 1 - SET TRANS SHIFT LEVER IN PARK DETENT
- 2 - SET SHIFT LEVER IN PARK POSITION.
- 3 - ASM PIN, CABLE AND LEVER AND TORQUE NUT.

7E-3

Figure 7E-3 - 400 - "E" Series



7E-4



VIEW OF TRAN SHIFT LEVER

Figure 7E-4 - 400 - "E" Series

350 and 400 TURBO HYDRA-MATIC TRANSMISSION LINKAGE ADJUSTMENT (Column Shift)
ALL SERIES

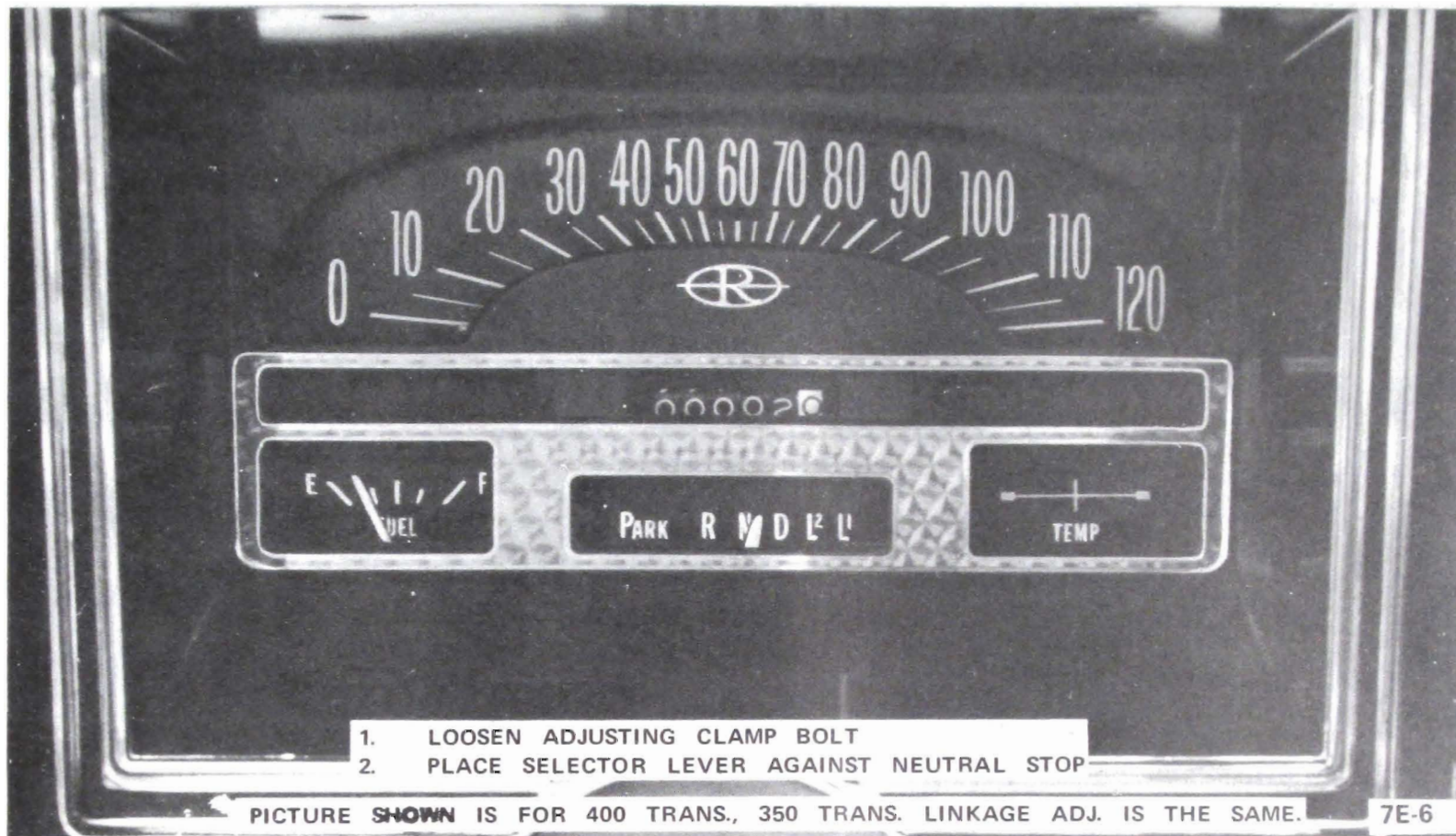


Figure 7E-6

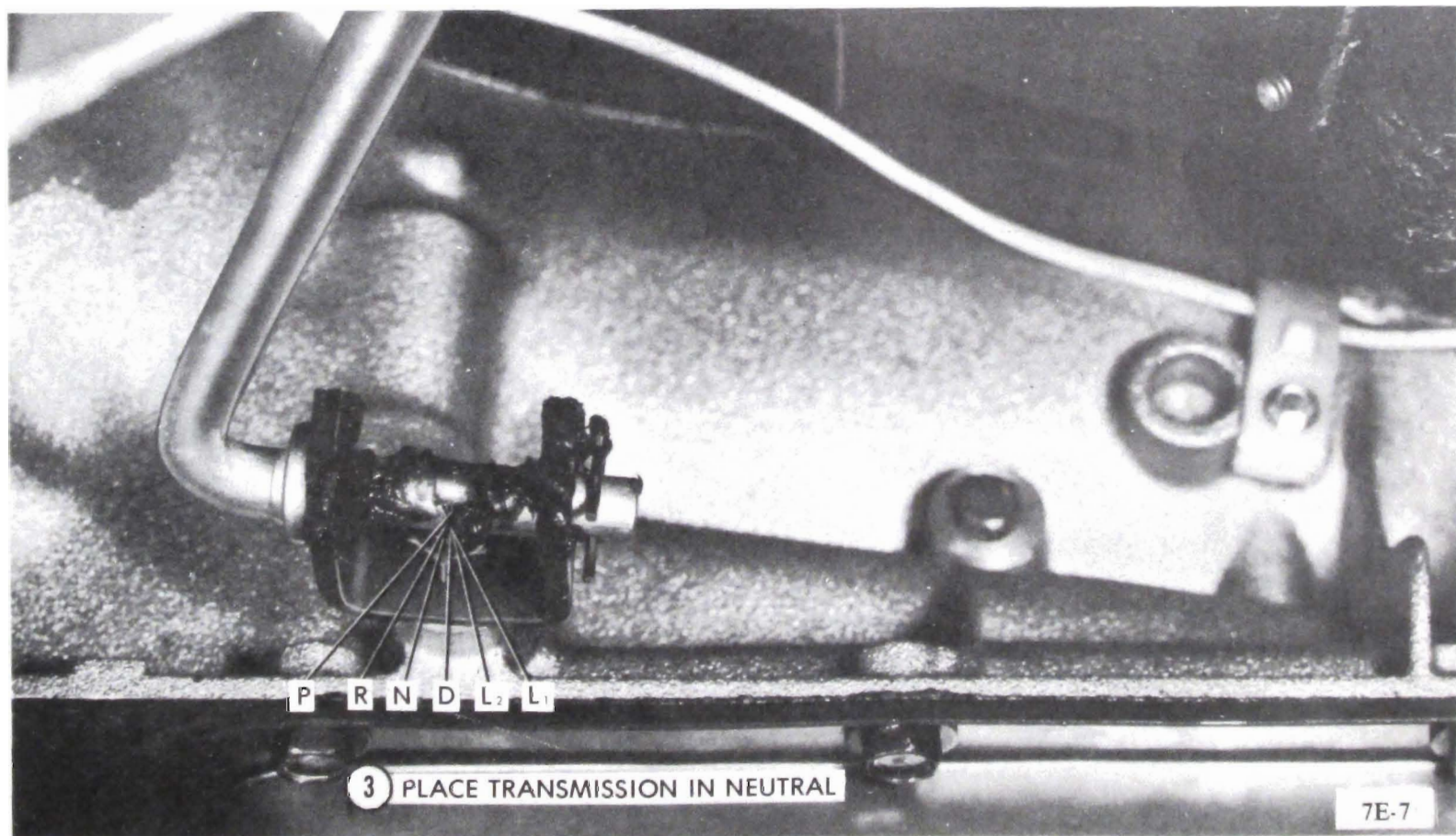


Figure 7E-7

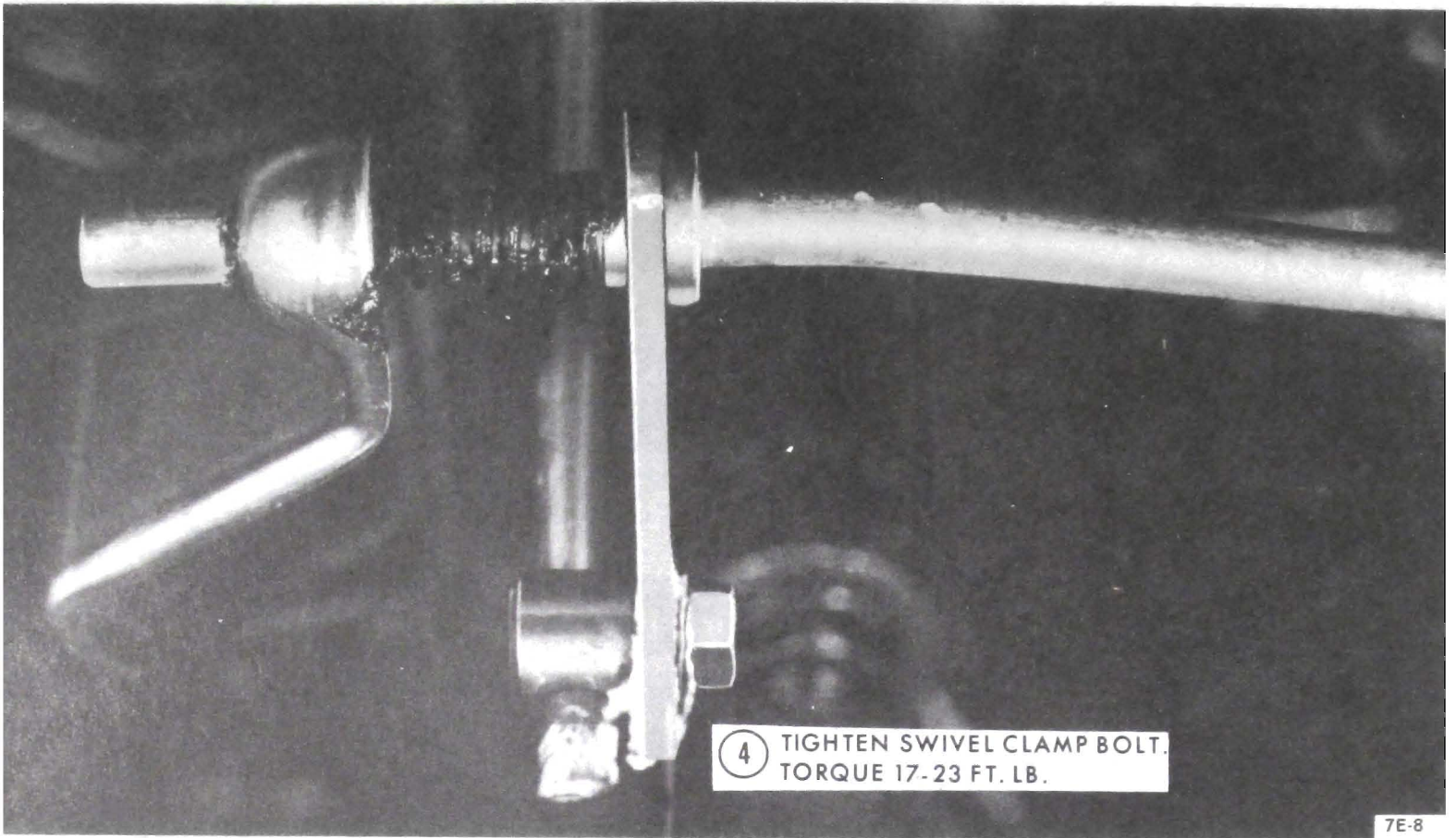
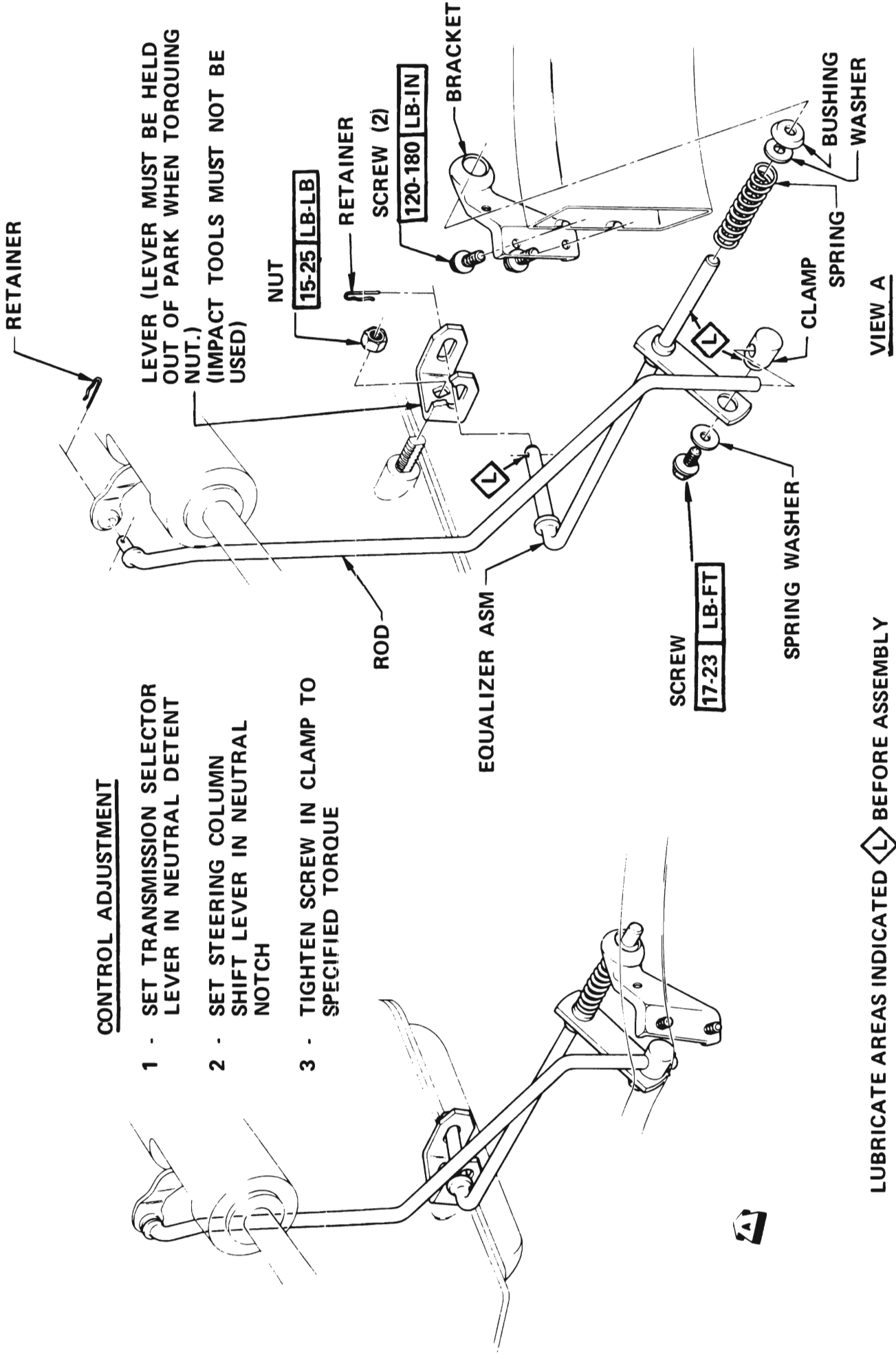


Figure 7E-8



7E-9

LUBRICATE AREAS INDICATED  BEFORE ASSEMBLY

Figure 7E-9

CONTROL ADJUSTMENT

1. SET TRANSMISSION SELECTOR LEVER IN NEUTRAL DETENT.
2. SET STEERING COLUMN SHIFT LEVER IN NEUTRAL NOTCH.
3. TIGHTEN SCREW IN CLAMP TO SPECIFIED TORQUE.

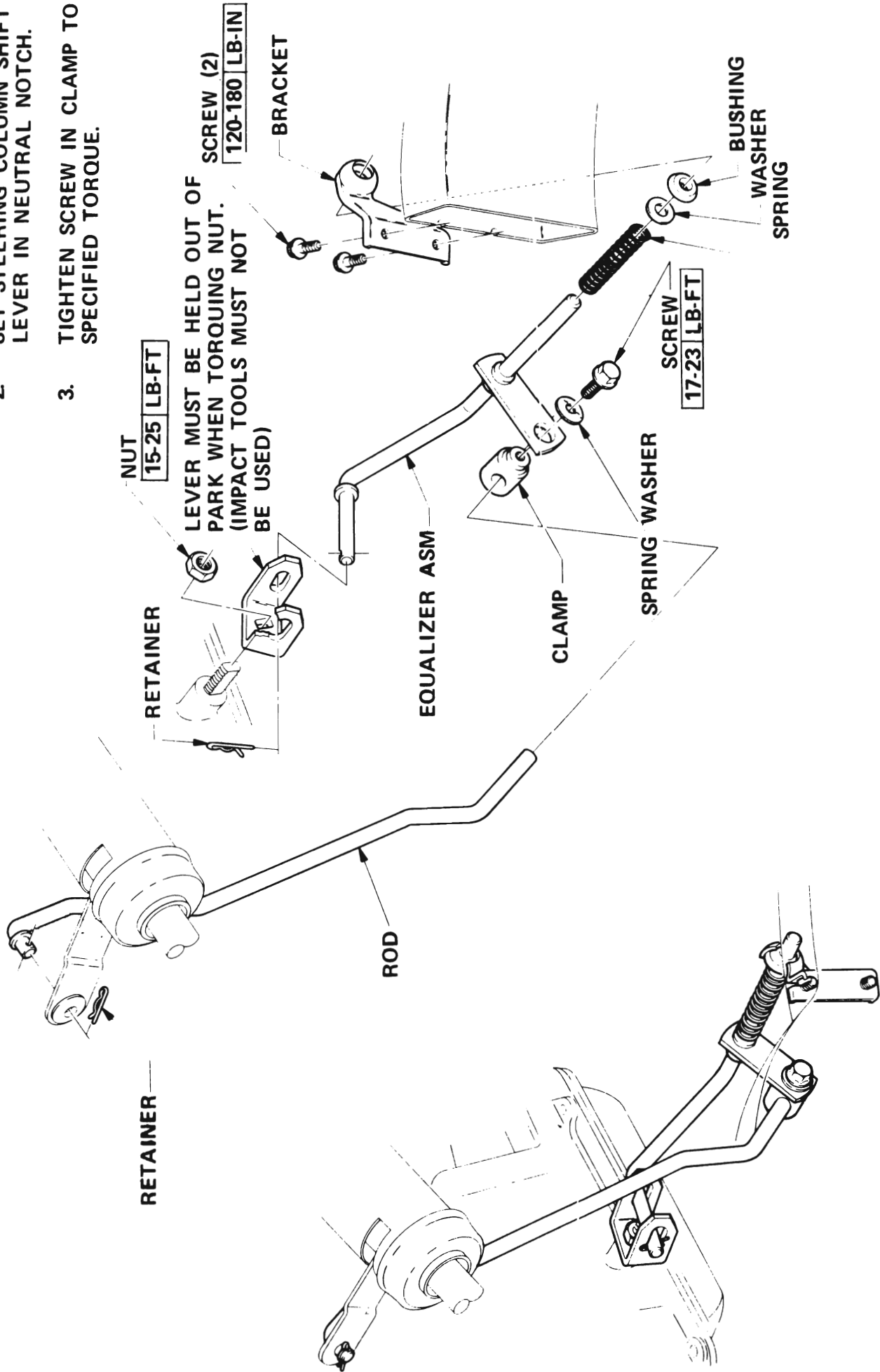
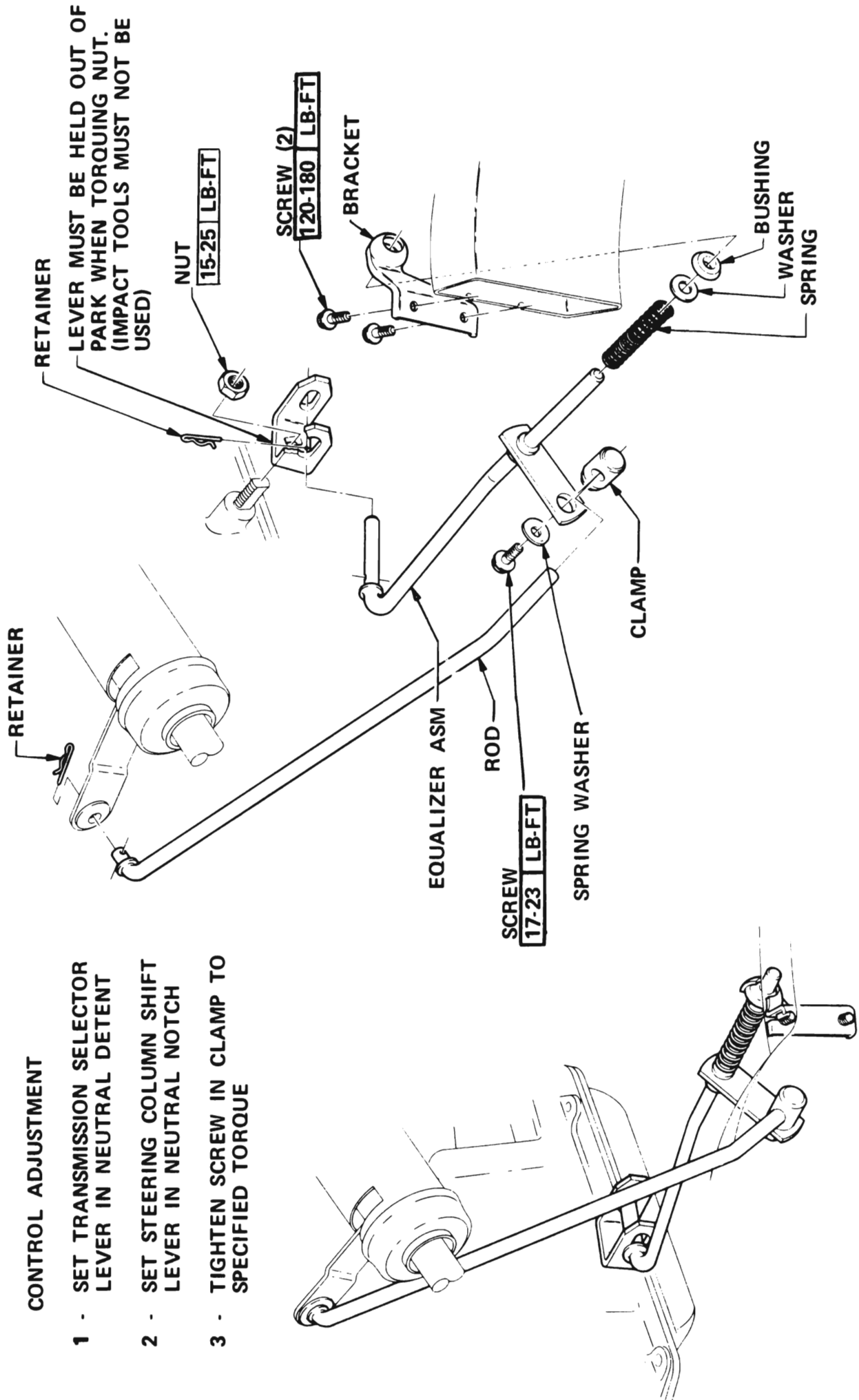


Figure 7E-11



7E-12

CONTROL ADJUSTMENT

- 1 - SET TRANSMISSION SELECTOR LEVER IN NEUTRAL DETENT
- 2 - SET STEERING COLUMN SHIFT LEVER IN NEUTRAL NOTCH
- 3 - TIGHTEN SCREW IN CLAMP TO SPECIFIED TORQUE

Figure 7E-12

3-SPEED MANUAL TRANSMISSION LINKAGE
ADJUSTMENT - "A" SERIES

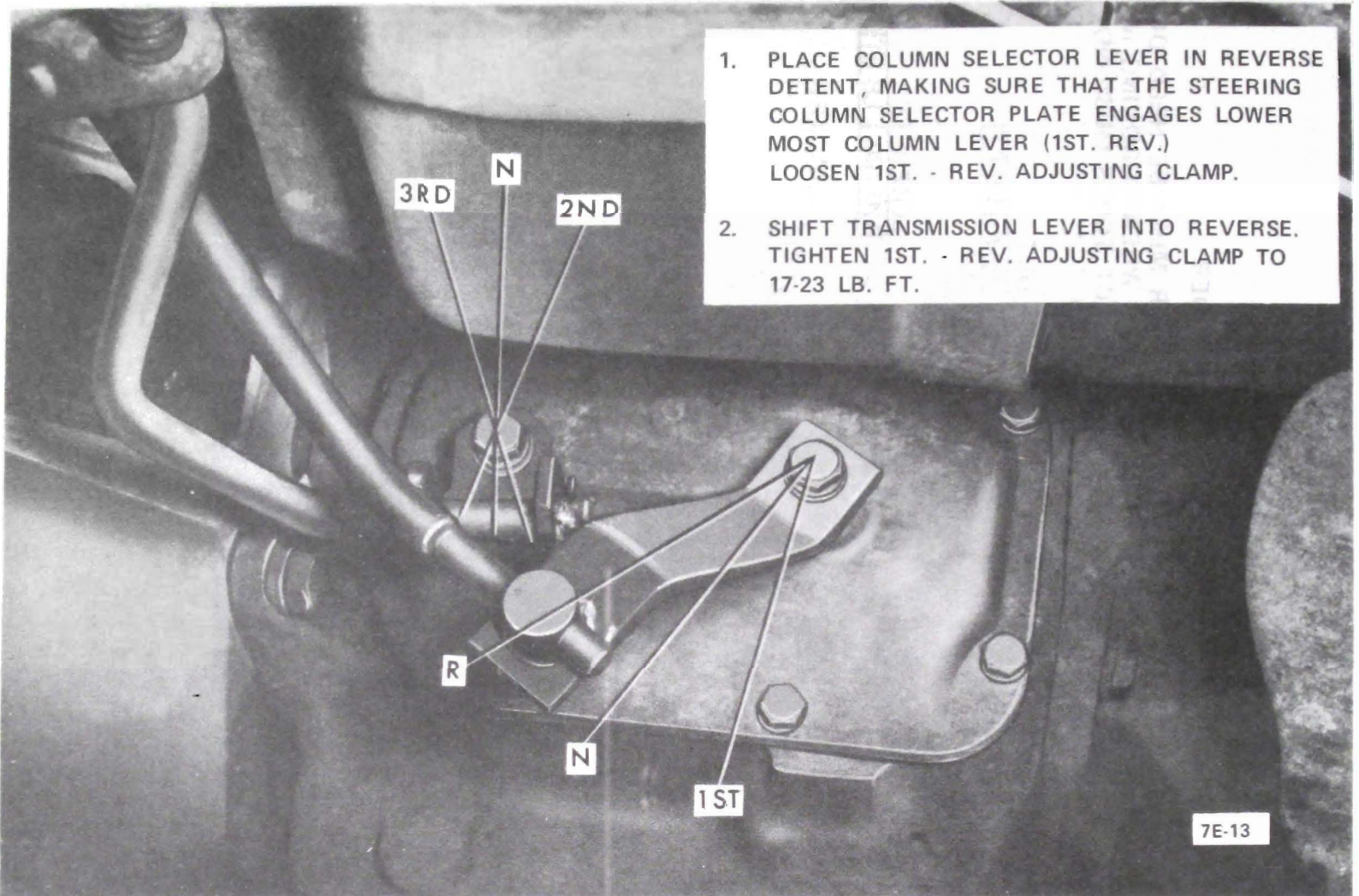


Figure 7E-13

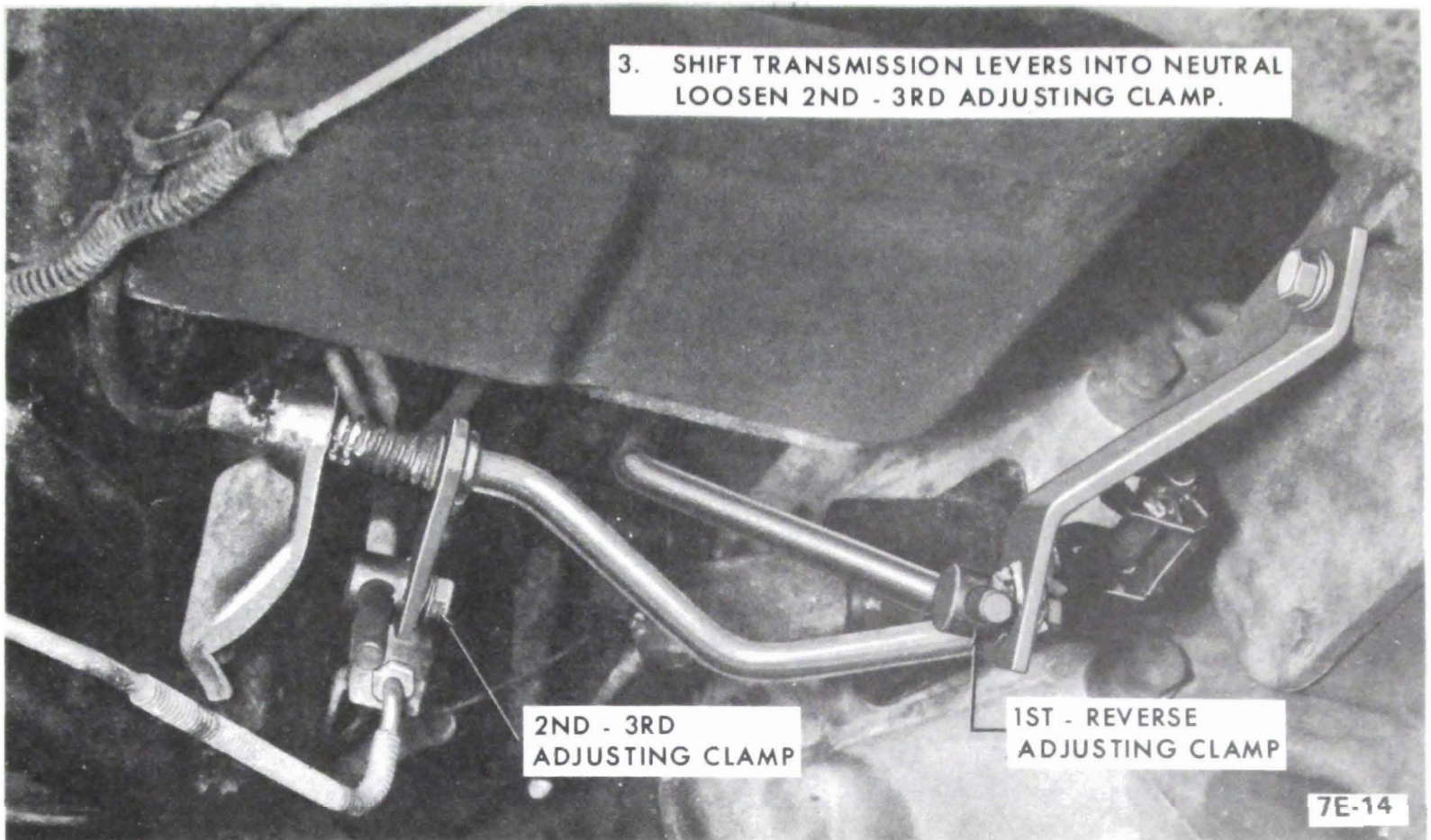


Figure 7E-14

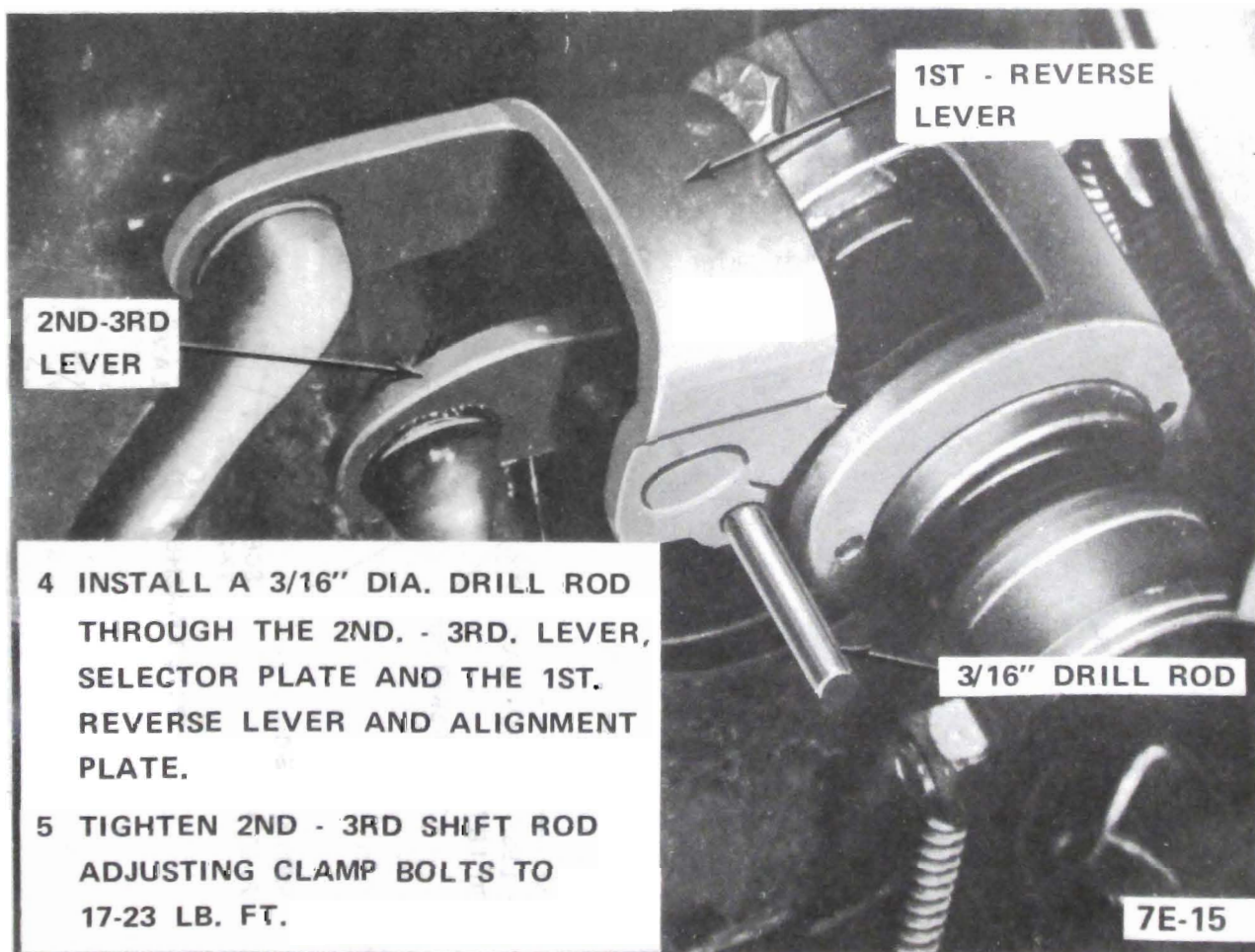


Figure 7E-15

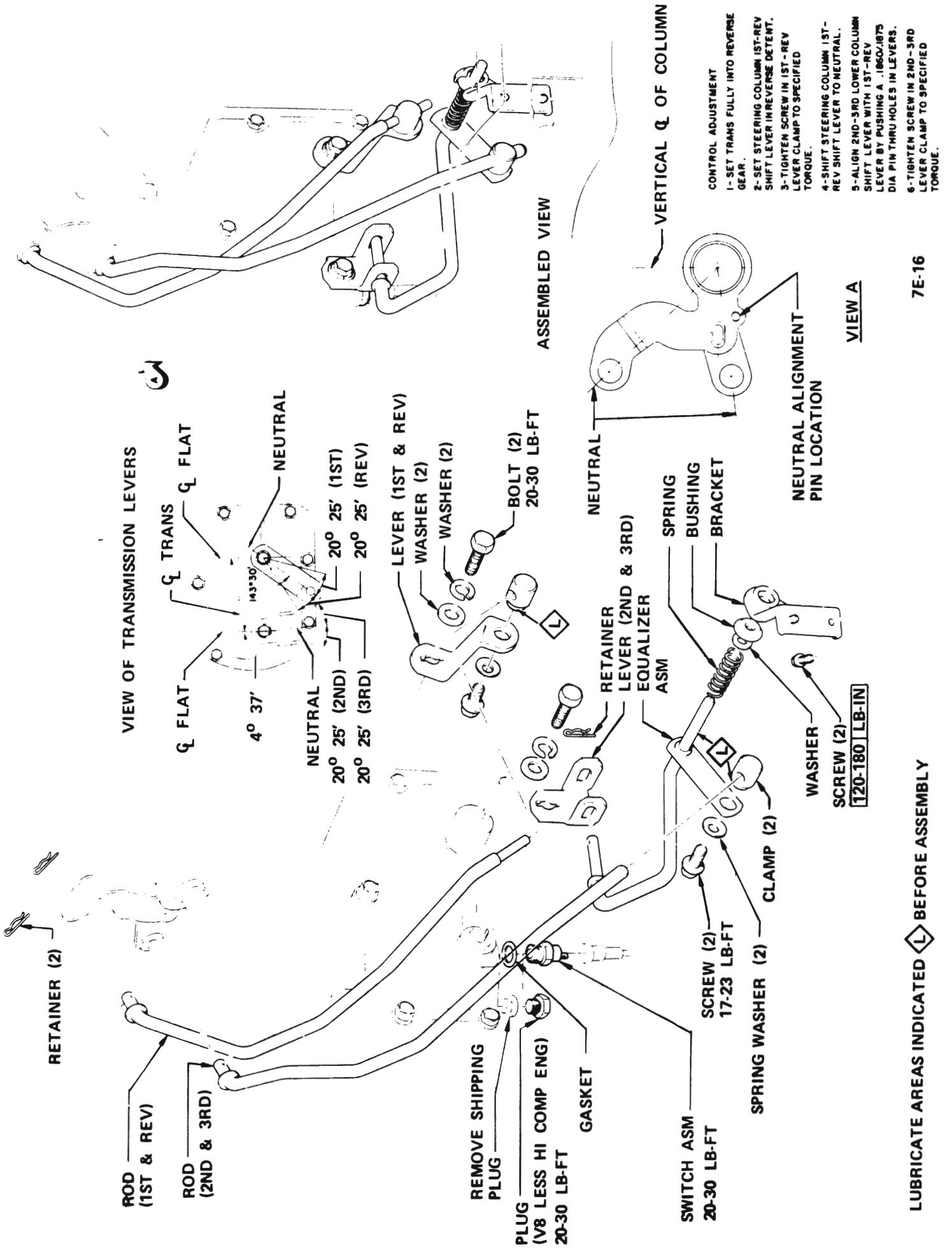


Figure 7E-16

4-SPEED MANUAL TRANSMISSION LINKAGE ADJUSTMENT
 (Floor Shift) - "A" SERIES G.S. OPTION

SHIFT LINKAGE ADJUSTMENT
 SEE VIEW A

- 1 BACK DRIVE ADJUSTMENT
- 1 - SHIFT TRANS FULLY INTO REVERSE.
- 2 - PUSH "BACK DRIVE" ROD UP INTO REVERSE DETENT IN THE STEERING COLUMN.
- 3 - TIGHTEN SCREW IN CLAMP TO SPECIFIED TORQUE.

LUBRICATE AREAS INDICATED  BEFORE ASSEMBLY.

INSERT .250 / .249 DIA ROD WITH ALL TRAN & CONTROL LEVERS IN NEUTRAL POSITION. MAKE SHIFT ROD ADJUSTMENTS AND TIGHTEN NUTS TO SPECIFIED TORQUE.

REMOVE SHIPPING PLUG

KNOB (LESS CONSOLE) SCREW DOWN TO BOTTOM THREADS. BACK OFF LESS THAN (1) TURN TO ALIGN SHIFT PATTERN BEFORE TIGHTENING NUT.

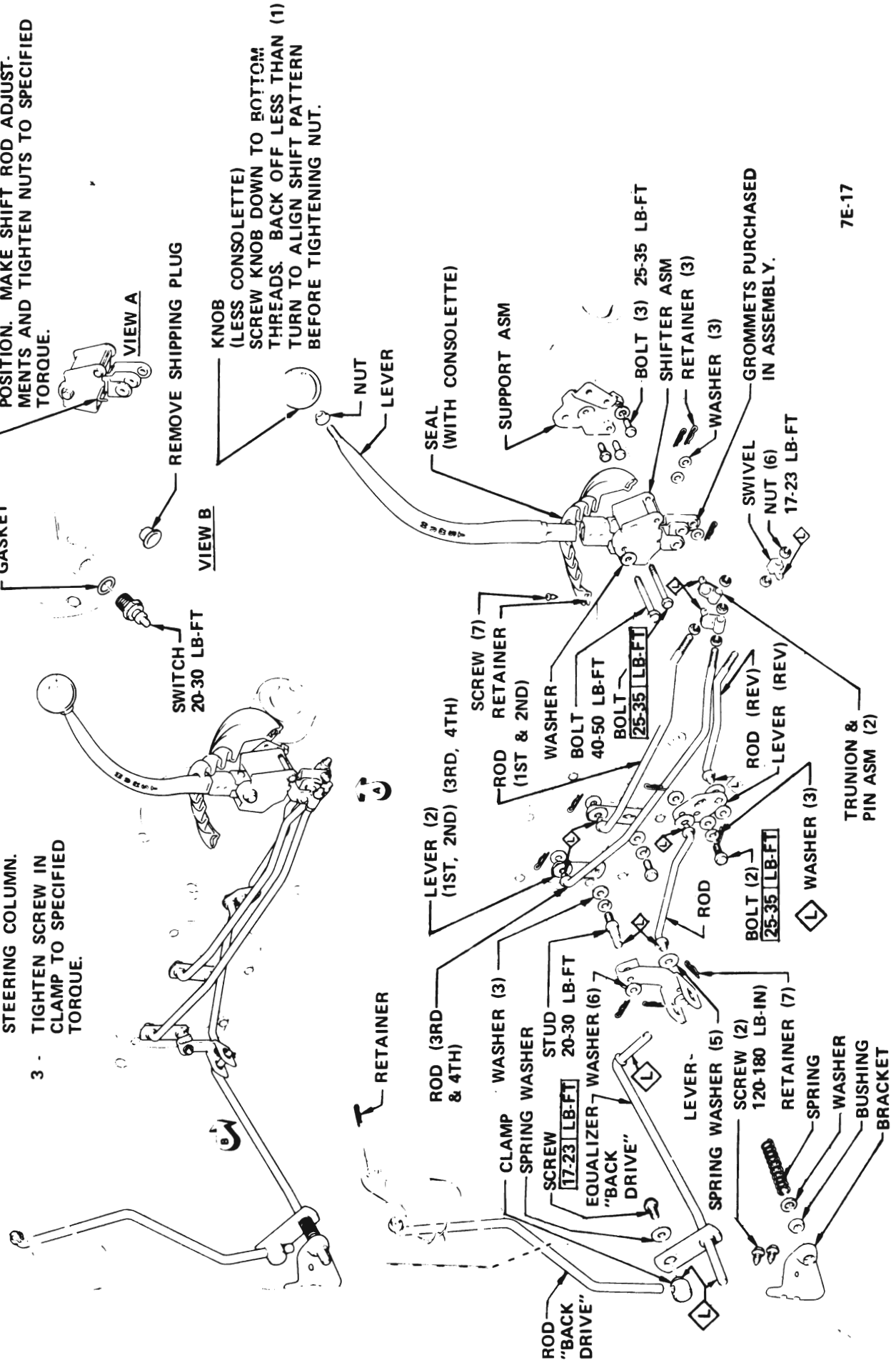


Figure 7E-17