

FRONT END PANEL

CONTENTS

Subject	Page No.
DESCRIPTION AND OPERATION:	
Description of Panels	8D-46
DIAGNOSIS: (Not Applicable)	
MAINTENANCE AND ADJUSTMENTS: (Not Applicable)	
MAJOR REPAIR:	
Front End Panel Extension Removal and Installation	8D-46
Front End Panel Removal and Installation	8D-46
SPECIFICATIONS: (Not Applicable)	

DESCRIPTION AND OPERATION

DESCRIPTION OF FRONT END PANEL

The front end panel on the A Series Regal and the E Series is made of a one piece molded fiber glass panel. As when handling any panel, caution should be used to prevent damage.

The A Series Century uses a metal front end panel.

MAJOR REPAIR

A SERIES CENTURY FRONT END PANEL EXTENSION REMOVAL AND INSTALLATION

A Series Removal

1. Remove radiator grille as per Grille Section.
2. Unplug headlight wiring and remove the 2 parking light lens assembly nuts, per each side, and pull assemblies out of way.
3. Remove the 6 nuts per side that attach the extension to vehicle, Figure 8D-1, and remove extension.
4. Remove headlight items from extension.

A Series Installation

1. Reverse the removal procedure for installation.

FRONT END PANEL REMOVAL AND INSTALLATION

A Series Century Removal

1. Remove radiator grille as per Grille Section.
2. Remove the front end panel extension assemblies as per extension removal in this section.
3. Remove the panel to fender bolts, see Figure 8D-1.
4. Remove the panel to radiator support bolts, see Figure 8D-1.
5. Remove the panel and protect from scratching.

A Series Century Installation

1. It may be necessary to loosen the front of one fender and pull outward to allow room for the panel to slide in place.
2. Reverse the installation procedure for installation.

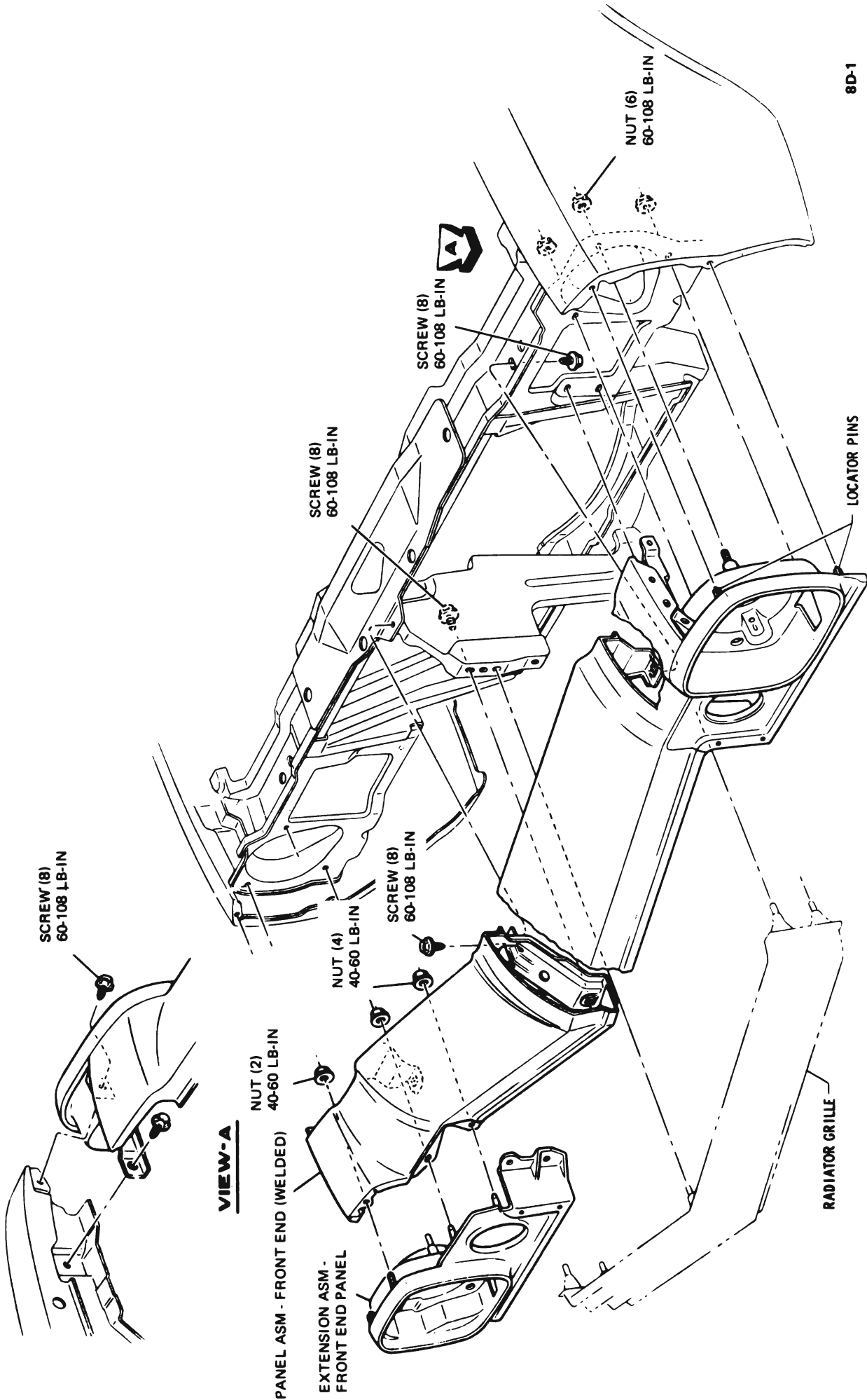


Figure 8D-1 A Series Century Front End Panel Assembly

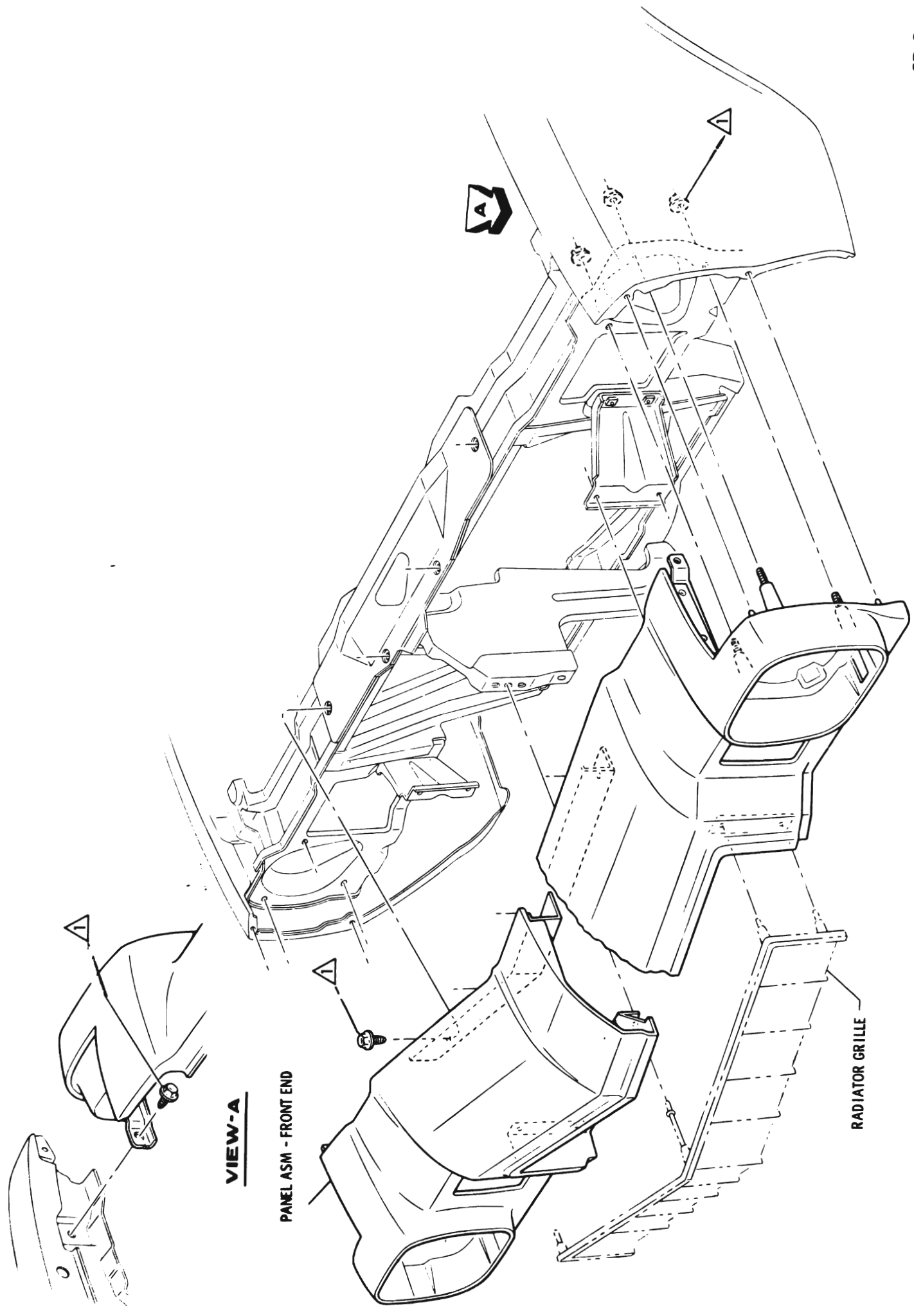


Figure 8D-2 A Series Regal Front End Panel Assembly

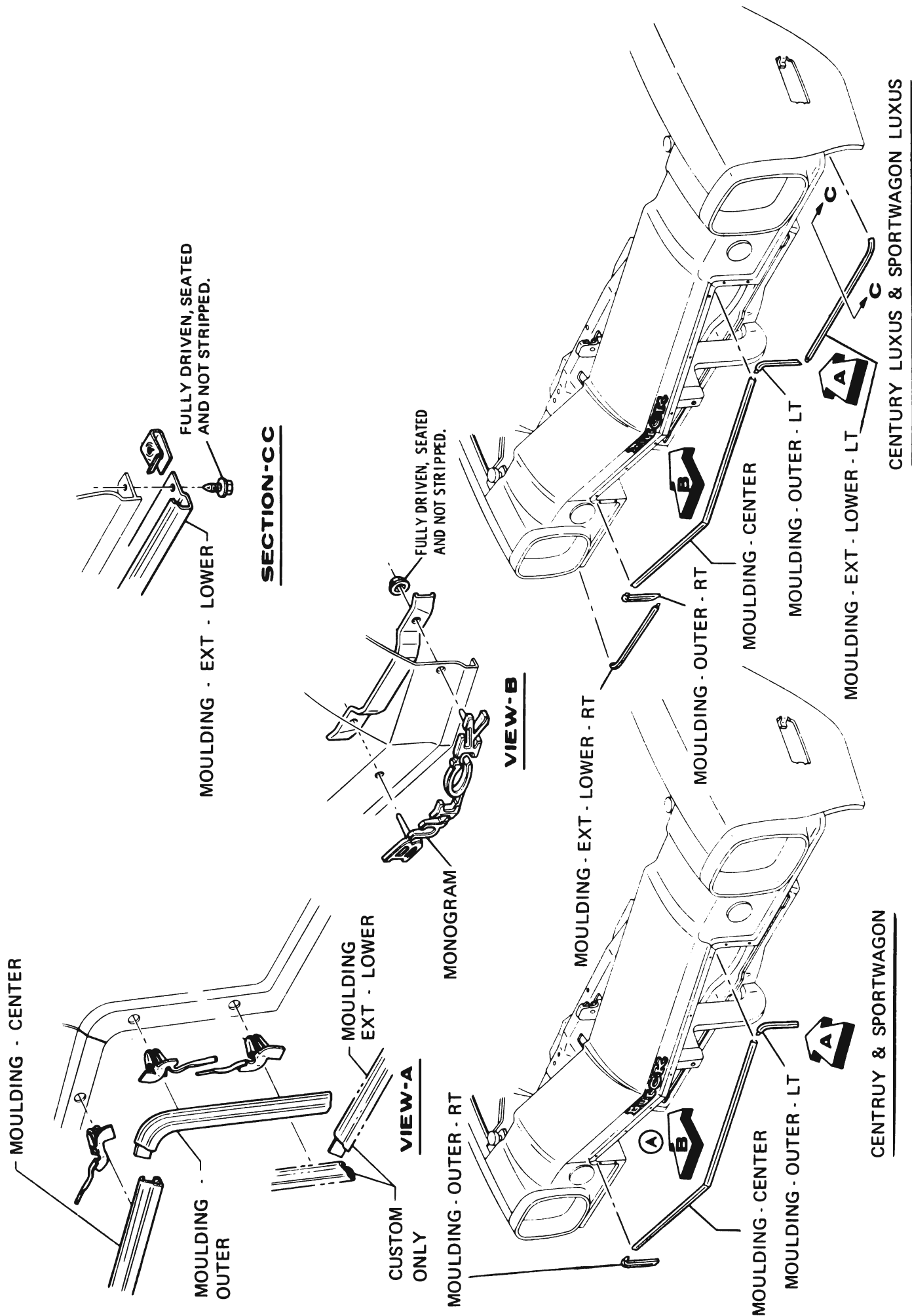


Figure 8D-3 A Series Century Ornamentation

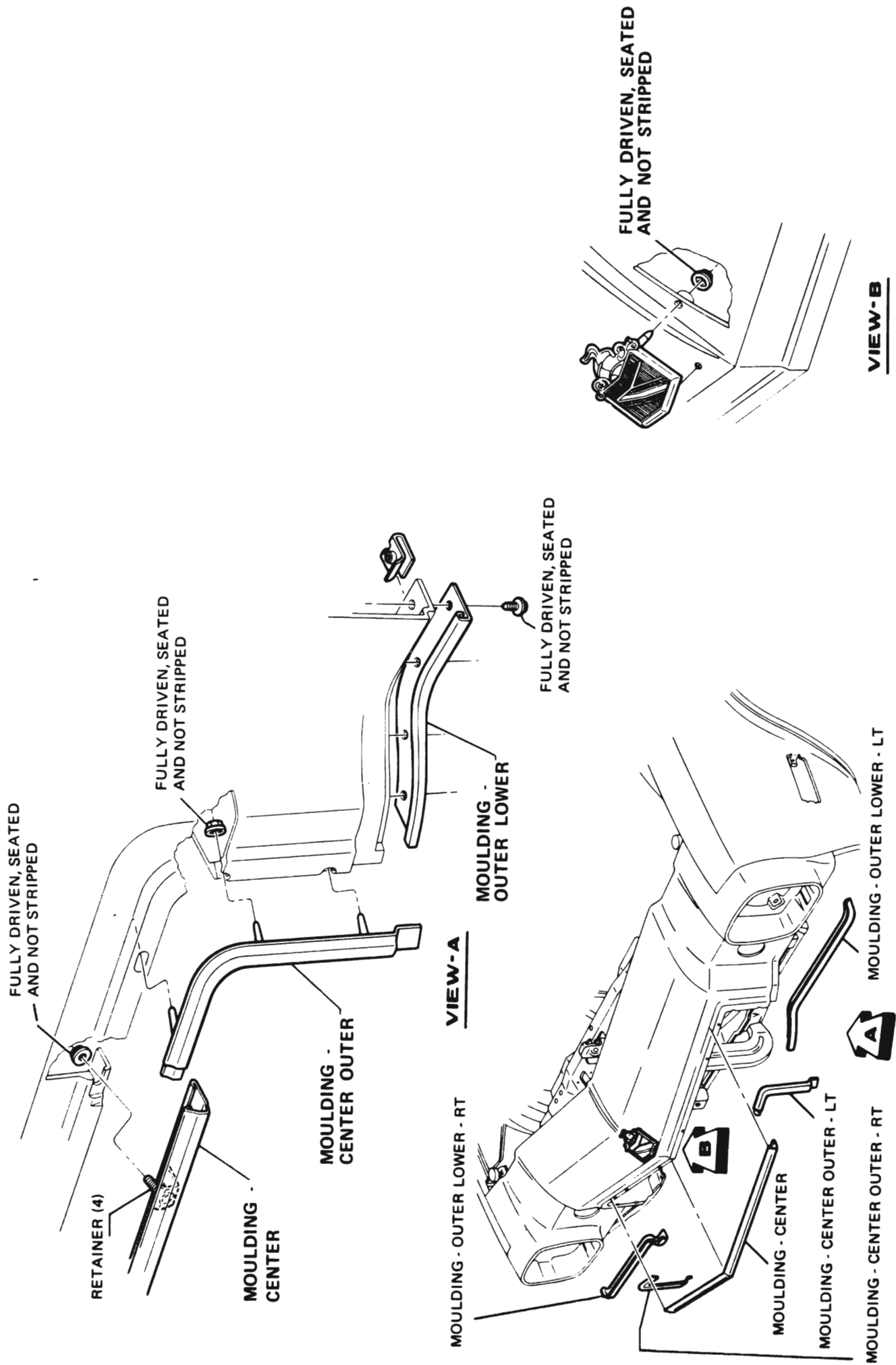
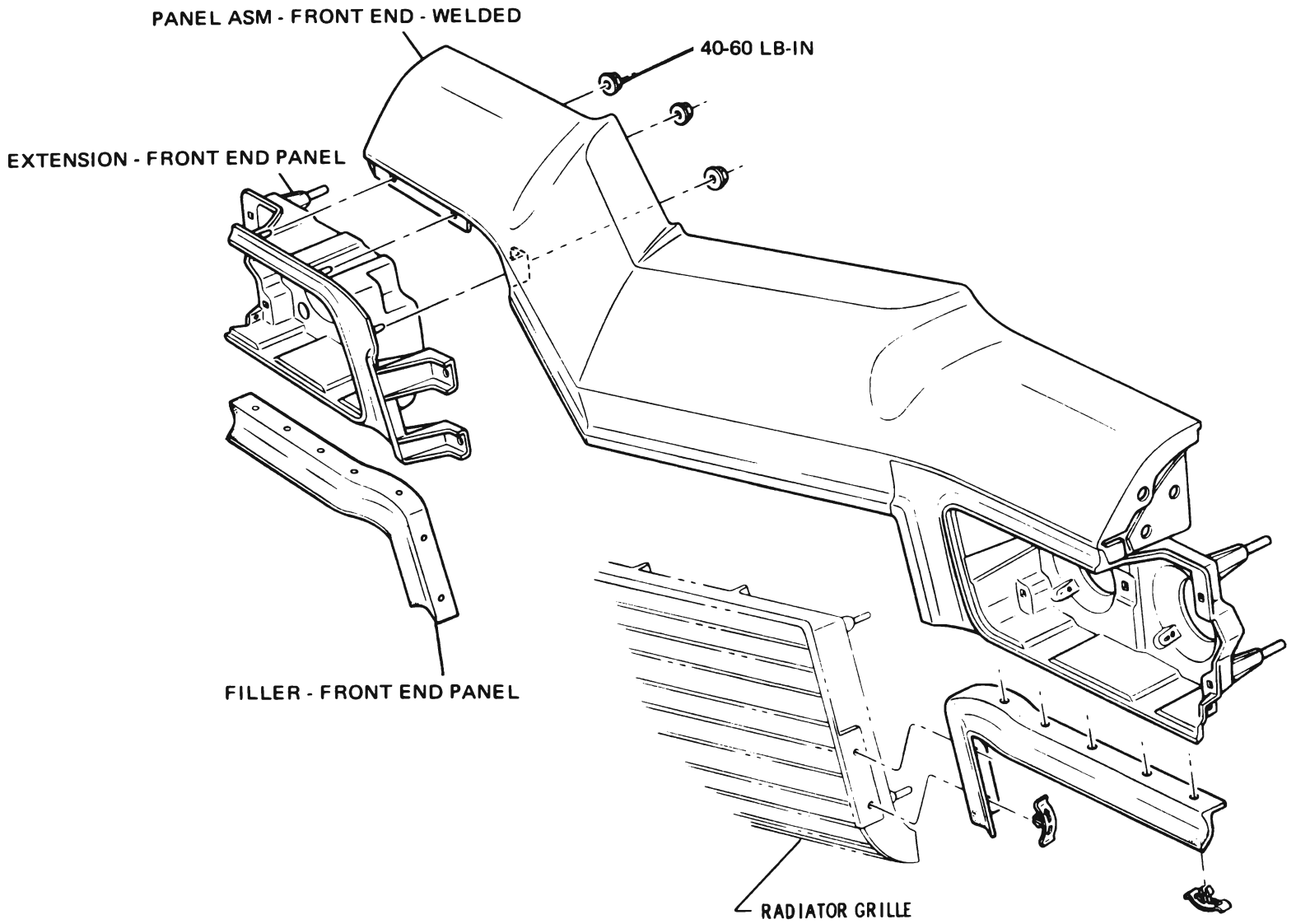
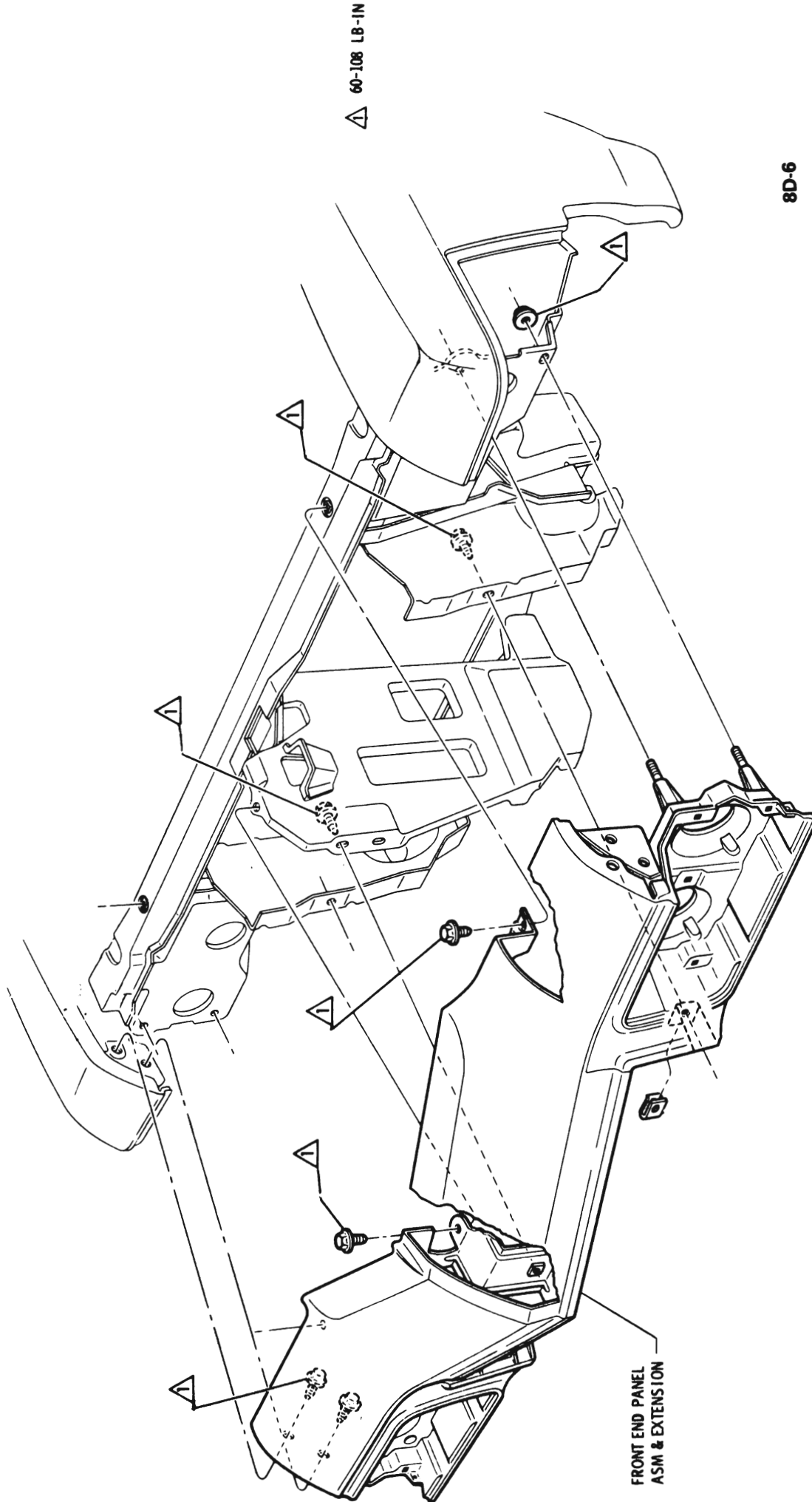


Figure 8D-4 A Series Regal Ornamentation



8D-5

Figure 8D-5 E Series Front End Extension Assembly



8D-6

Figure 8D-6 E Series Front End Panel

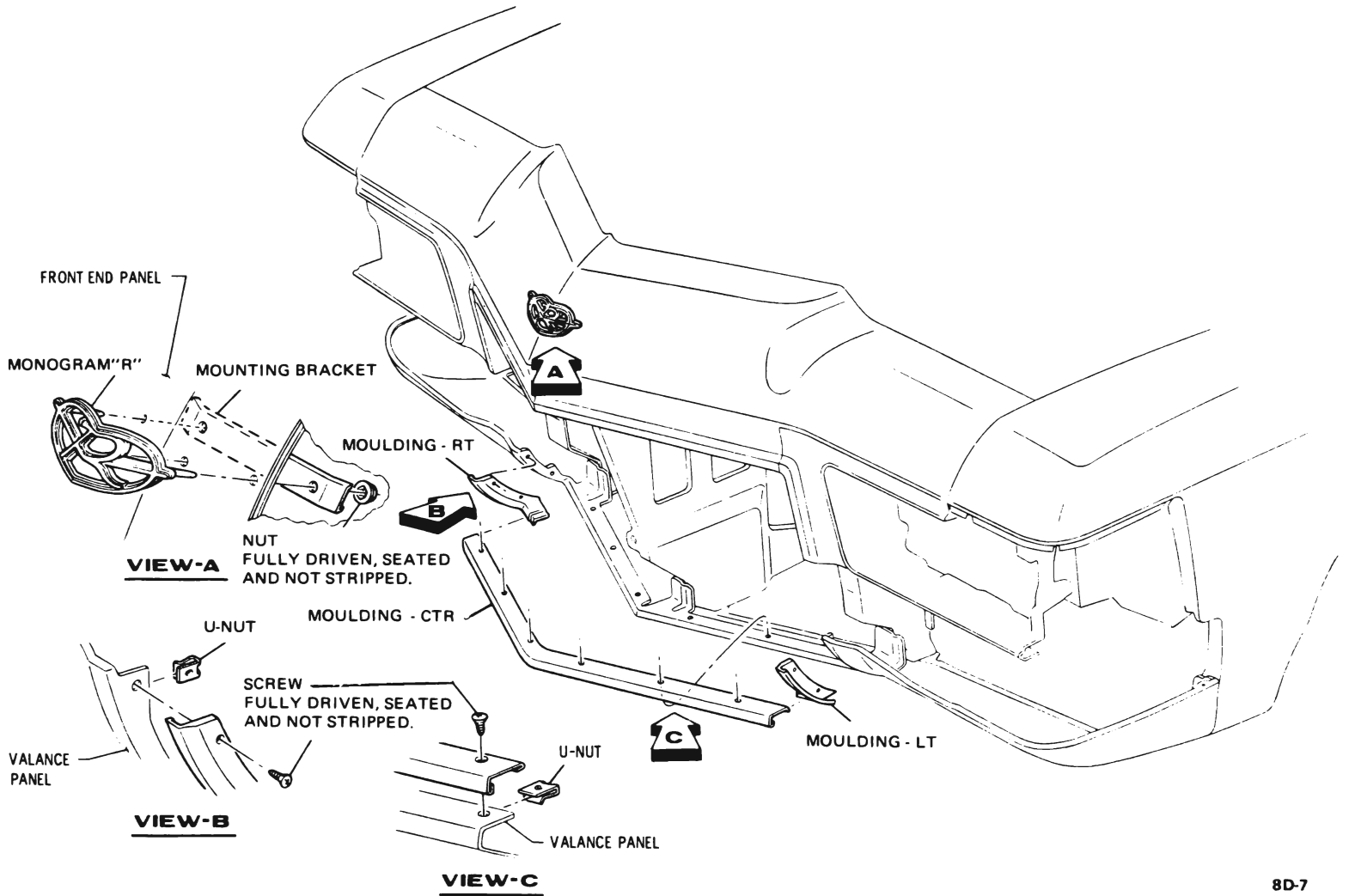


Figure 8D-7 E Series Ornamentation